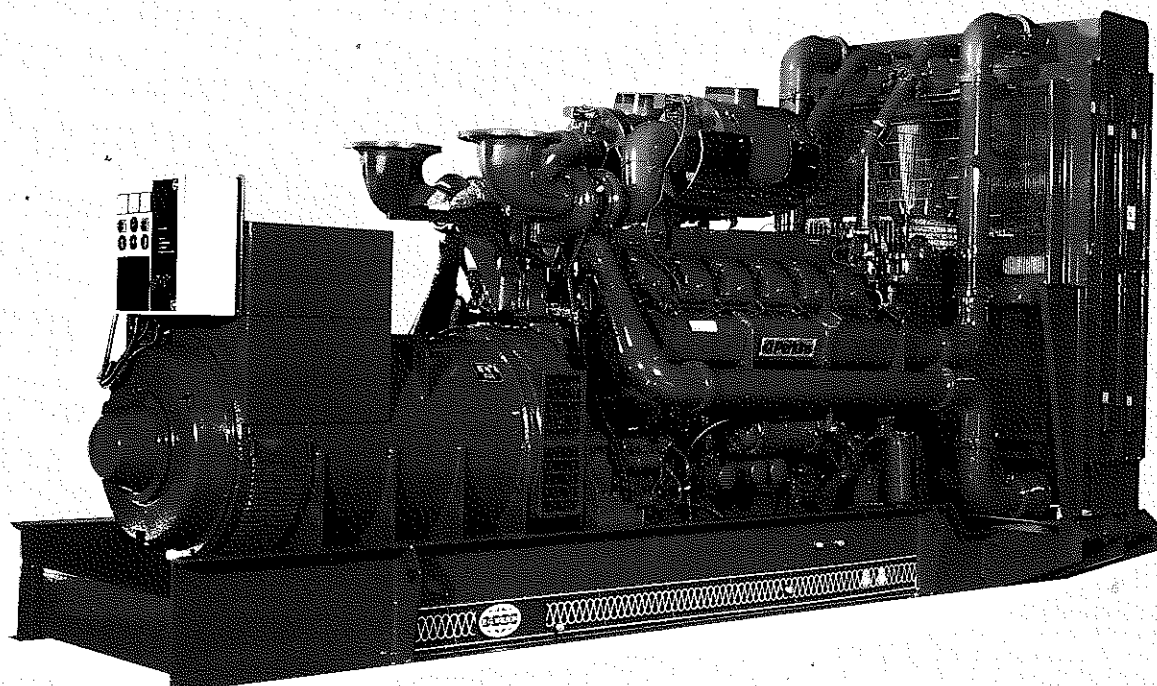
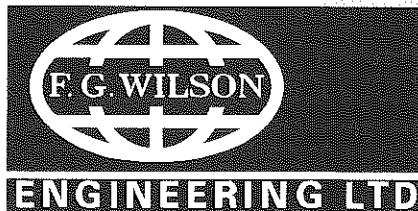


Group Headquarters  
 Old Glenarm Road  
 Larne, Co. Antrim, BT40 1EJ  
 Northern Ireland, United Kingdom  
 Tel: (44) 01574 261000  
 Fax: (44) 01574 261111



P1250 - P1650E

OUTPUT RATINGS					
Generating Set Model	Engine Model	380 - 415V 50Hz		480V 60Hz	
		kVA	kW	kVA	kW
P1250	4012TWG2	1250	1000	1250	1000
P1375E		1375	1100	1375	1100
P1275	4012TAG	1275	1020	TBA	TBA
P1400E		1400	1120	TBA	TBA
P1350	4012TAG1	1350	1080	1350	1080
P1500E		1500	1200	1500	1200
P1500	4012TAG2	1500	1200	1500	1200
P1650E		1650	1320	1650	1320

**Rating Definitions**

Ratings at 0.8 pf.

**Continuous Power - Models P1250, P1275, P1350, and P1500**

These ratings are applicable for supplying continuous electrical power (at variable load) in lieu of commercially purchased power. There is no limitation to the annual hours of operation and these models can supply 10% overload power for 1 hour in 12 hours.

**Standby Power - Models P1375E, P1400E, P1500E, and P1650E**

These ratings are applicable for supplying continuous electrical power (at variable load) in the event of a utility power failure. No overload is permitted on these ratings. The alternator on these models is peak continuous rated (as defined in ISO 8528-3) at 27°C.

Note : Standard reference conditions 27°C (80°F) Air Inlet Temp, 152.4m (500 ft) A.S.L.

DIMENSIONS AND WEIGHTS*				
Generating Set Models	Length: mm (in)	Width: mm (in)	Height: mm (in)	Net: kg (lb)
P1250 - P1375E	5374 (212)	1760 (69.3)	2462 (96.9)	10650 (23483)
P1275 - P1400E	5374 (212)	1760 (69.3)	2462 (96.9)	10650 (23483)
P1350 - P1500E	5250 (207)	2220 (87.4)	2895 (114)	10550 (23263)
P1500 - P1650E	5250 (207)	2220 (87.4)	2895 (114)	10550 (23263)

\* Preliminary - Contact Factory for exact dimensions.

Net = Weight with Lube Oil

## TECHNICAL DATA

Generating Set Model	P1250 P1375E	P1275 P1400E	P1350 P1500E	P1500 P1650E
Engine Manufacturer Model	<b>PERKINS</b>			
	4012TWG2	4012TAG	4012TAG1	4012TAG2
Number of Cylinders:	12 VEE			
Cubic Capacity: Litres (cu. in)	45.84 (2797)			
Bore/Stroke: mm (in)	160 (6.30) / 190 (7.48)			
Compression Ratio:	13.6:1			
Aspiration:	Turbocharged and Aftercooled	Turbocharged and Charge Air Cooled		
<b>50 Hz</b>				
Engine Speed:	1500 RPM			
Maximum Continuous Power at Flywheel: kW (hp)	1207 (1619)	1209 (1621)	1300 (1744)	1422 (1907)
BMEP: kPA (psi)	2110 (306)	2110 (306)	2770 (402)	2480 (300)
Piston Speed: m/sec (ft/min)	9.5 (31.2)			
Fuel Consump.: l/hr (USg/hr)	P1250 268 (70.8)	P1275 277 (73.2)	P1350 290 (76.6)	P1500 321 (84.8)
	P1375E 298 (78.7)	P1400E 307 (81.1)	P1500E 326 (86.1)	P1650E 361 (95.4)
Heat Rejection to Exhaust System: kW (Btu/min)	1013 (57619)	972 (55287)	963 (54775)	1105 (62852)
Heat Rejection to Cooling System: kW (Btu/min)	590 (33559)	693 (39418)	722 (41067)	810 (46073)
Total Radiated Heat: kW (Btu/min)	198 (11262)	151 (8589)	173 (9840)	202 (11490)
Exhaust Temperature: °C (°F)	460 (860)	460 (860)	440 (824)	466 (871)
Cooling Air Flow: m³/min (cfm)	1764 (62287)	1530 (54024)	1830 (64617)	1740 (61439)
Combustion Air Flow: m³/min (cfm)	98.1 (3463)	112 (3968)	96.4 (3404)	109 (3831)
Exhaust Gas Flow: m³/min (cfm)	245 (8651)	283 (9993)	238 (8404)	274 (9675)
<b>60 Hz</b>				
Engine Speed:	1800 RPM			
Maximum Continuous Power at Flywheel: kW (hp)	1207 (1619)	TBA	1300 (1744)	1423 (1900)
BMEP: kPA (psi)	1760 (255)	TBA	1890 (274)	2070 (300)
Piston Speed: m/sec (ft/min)	11.4 (37.4)			
Fuel Consump.: l/hr (USg/hr)	P1250 276 (72.9)	P1275 TBA	P1350 295 (77.9)	P1500 332 (87.7)
	P1375E 309 (81.6)	P1400E TBA	P1500E 331 (87.5)	P1650E 366 (96.7)
Heat Rejection to Exhaust System: kW (Btu/min)	1020 (58018)	TBA	1014 (57676)	1161 (66038)
Heat Rejection to Cooling System: kW (Btu/min)	648 (36858)	TBA	715 (40669)	800 (45504)
Total Radiated Heat: kW (Btu/min)	248 (14106)	TBA	188 (10693)	215 (12229)
Exhaust Temperature: °C (°F)	452 (846)	TBA	430 (806)	480 (896)
Cooling Air Flow: m³/min (cfm)	1695 (59850)	TBA	1740 (61439)	1740 (61439)
Combustion Air Flow: m³/min (cfm)	103 (3631)	TBA	102 (3584)	114 (4014)
Exhaust Gas Flow: m³/min (cfm)	254 (8969)	TBA	247 (8722)	283 (9993)

Note: All engine performance data based on our maximum continuous ratings at the standard reference conditions specified. Fuel consumption data at full load with diesel fuel with a specific gravity of 0.85 and conforming to BS2869:1988, Class A2.

In line with our policy of continuous product development, we reserve the right to change specifications without notice. P1250 - P1650E/0295