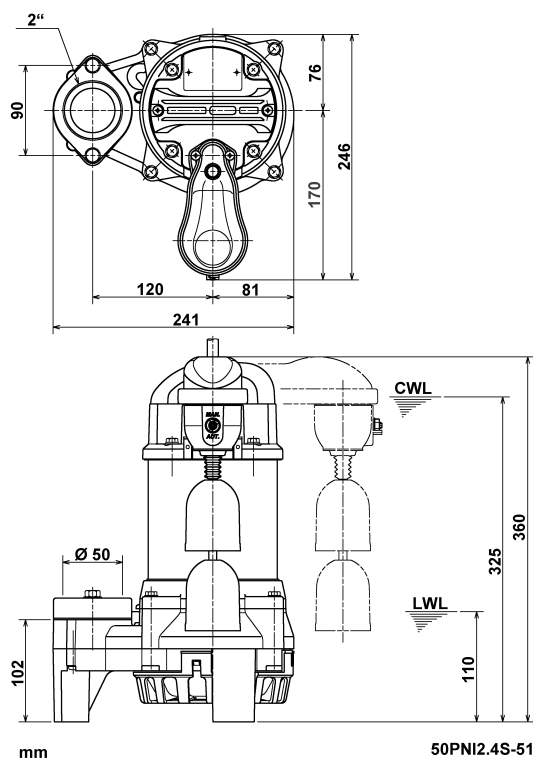
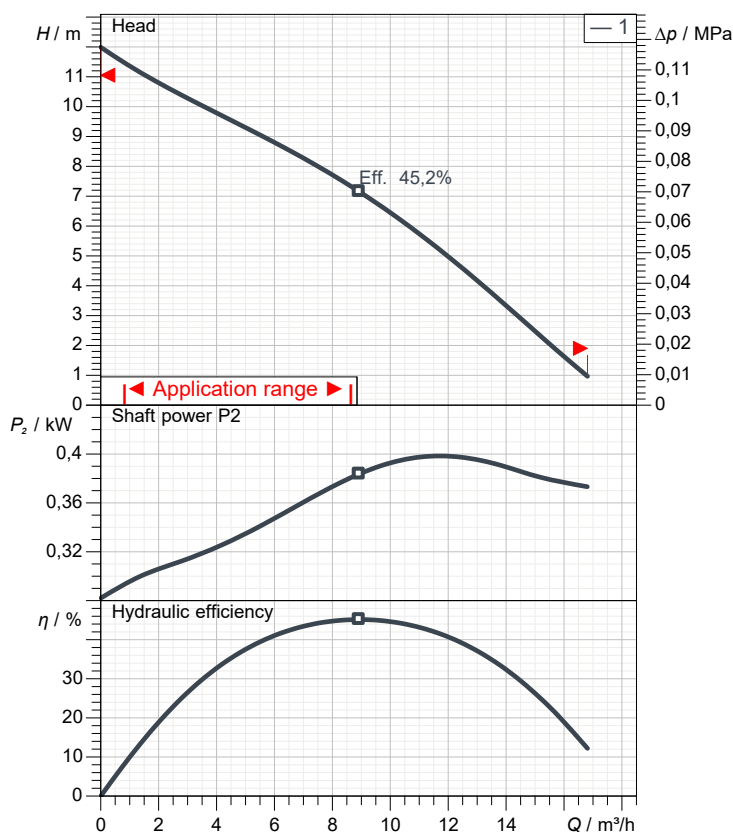


# Data sheet 50PNI2.4S-51



CWL: Continuous running water level  
LWL: Lowest running water level



## Specification

Electric submersible pump PNI-series  
Degree of protection IP 68  
Pressure resistance max. 10 m  
Type of impeller Vortex impeller  
Free passage 10 mm  
Suitable for:  
sewage water, waste water, various waste water

## Electric motor

Dry-type submersible induction motor  
Insulation class E 2Poles 2.765 1/min  
Starting mode  
Rated voltage 230 V 50 Hz 1~  
Power uptake 0,63 kW  
Rated power 0,40 kW  
Rated current 2,8 A  
Start current 7,2 A

## Cable

10m H07RN8-F 3Cx1mm<sup>2</sup>

## Motor Protection

Circle thermal protector  
(snap-action bi-metal device)

## Shaft seal

Double inside mechanical seal in oil bath  
additional lubrication by oil lifting device  
Primary seal  
Silicon carbide on ceramic  
Secondary seal  
Ceramic on carbon

## Bearings

Shielded ball bearings, maintenance-free

## Materials

Impeller	PPO-GF20
Motor Frame	SUS304 (EN-X5CrNi18-10)
Shaft	SUS403 (EN-X6Cr13)

## Discharge size

50mm screwed-in mating flange

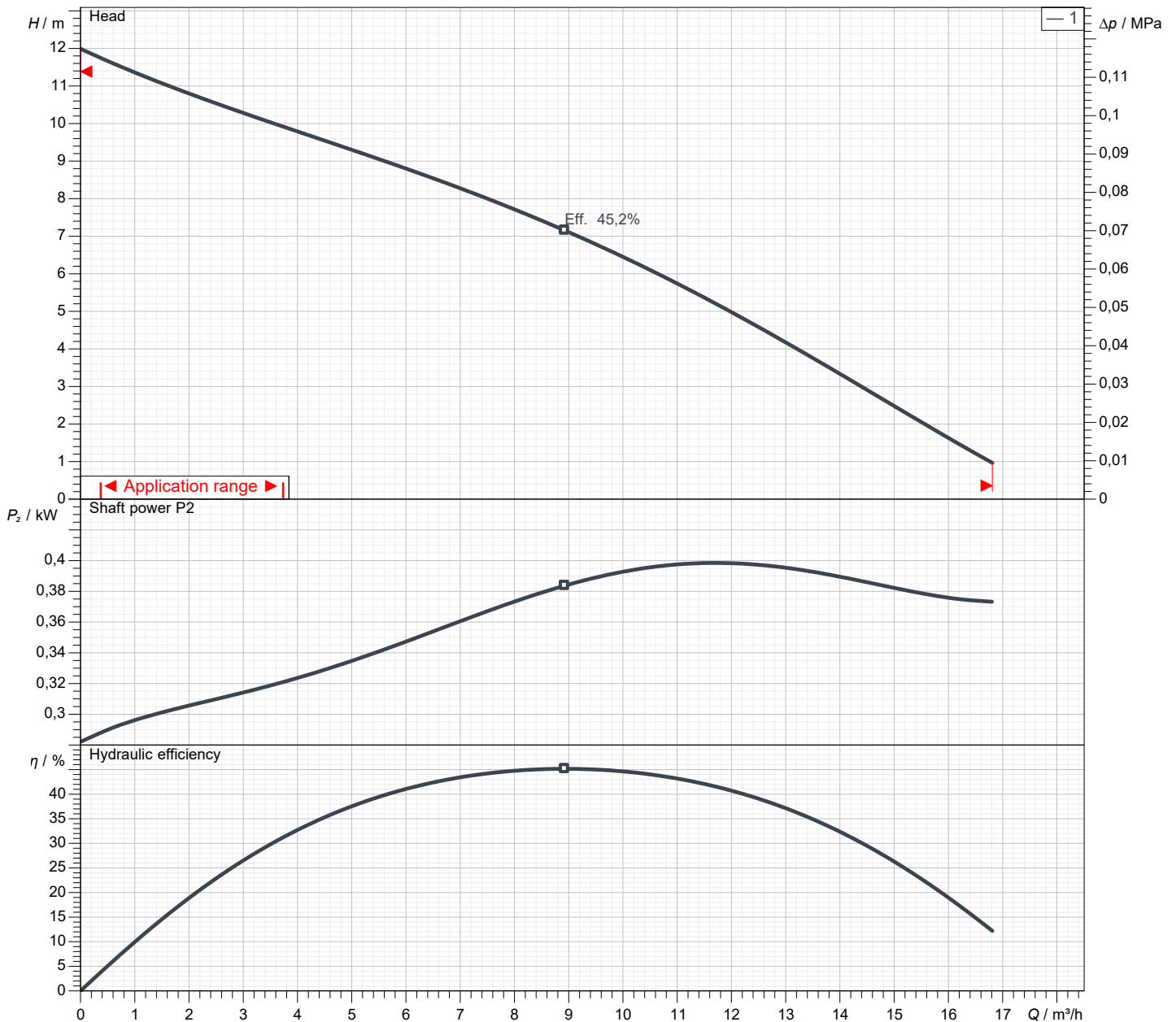
## Weight

7,4 kg (dry weight of the pump only without cable)

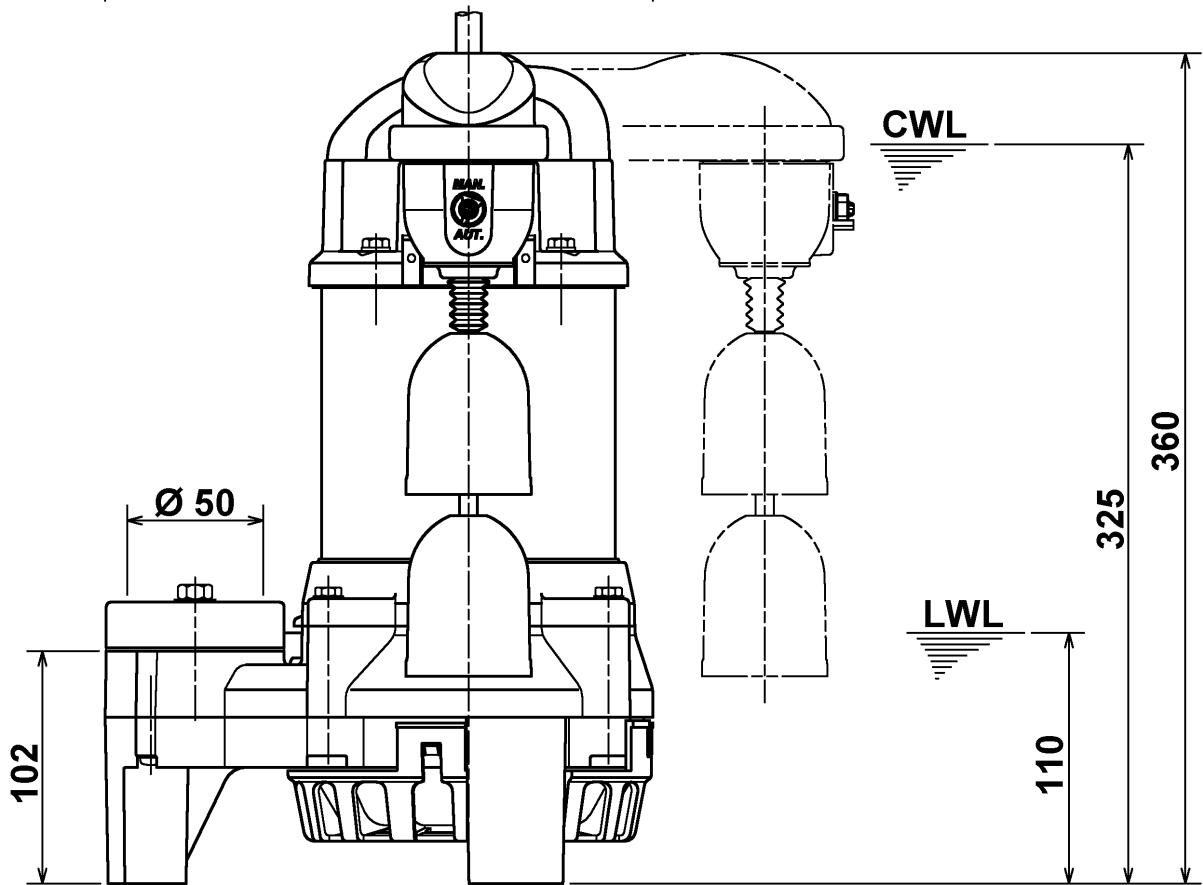
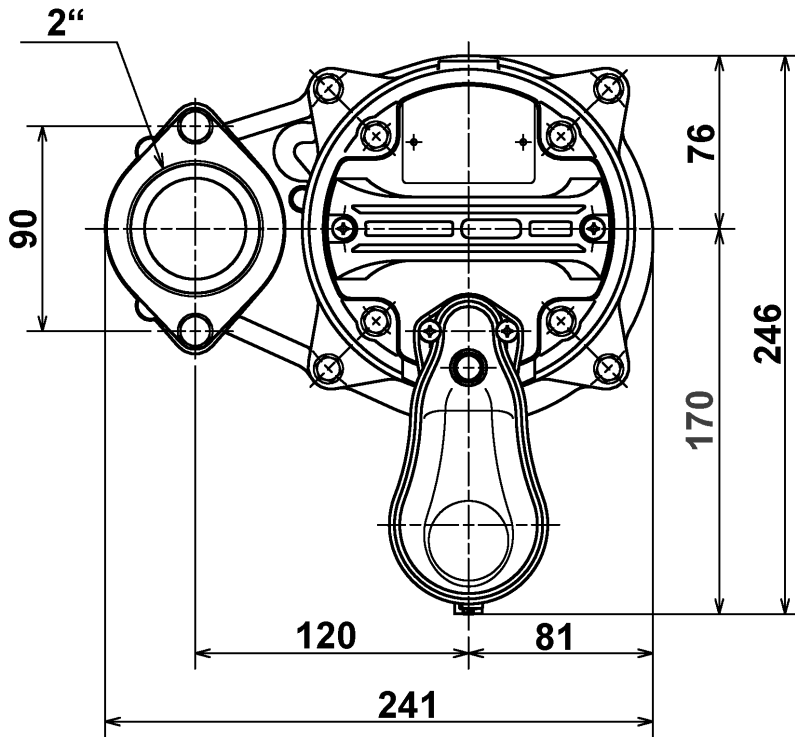
# Performance curve

## 50PNI2.4S-51

Discharge port	2"
Head	12,0 m
Flow	16,8 m <sup>3</sup> /h
Rated power	0,40 kW
Power input	0,63 kW
Phases	1~
Voltages	230 V
Frequency	50 Hz
Rated current	2,8 A
Starting current	7,20 A
Number of poles	2
Speed	2.765 1/min
Starting mode	
Insulation class	E



# Dimensions 50PNI2.4S-51

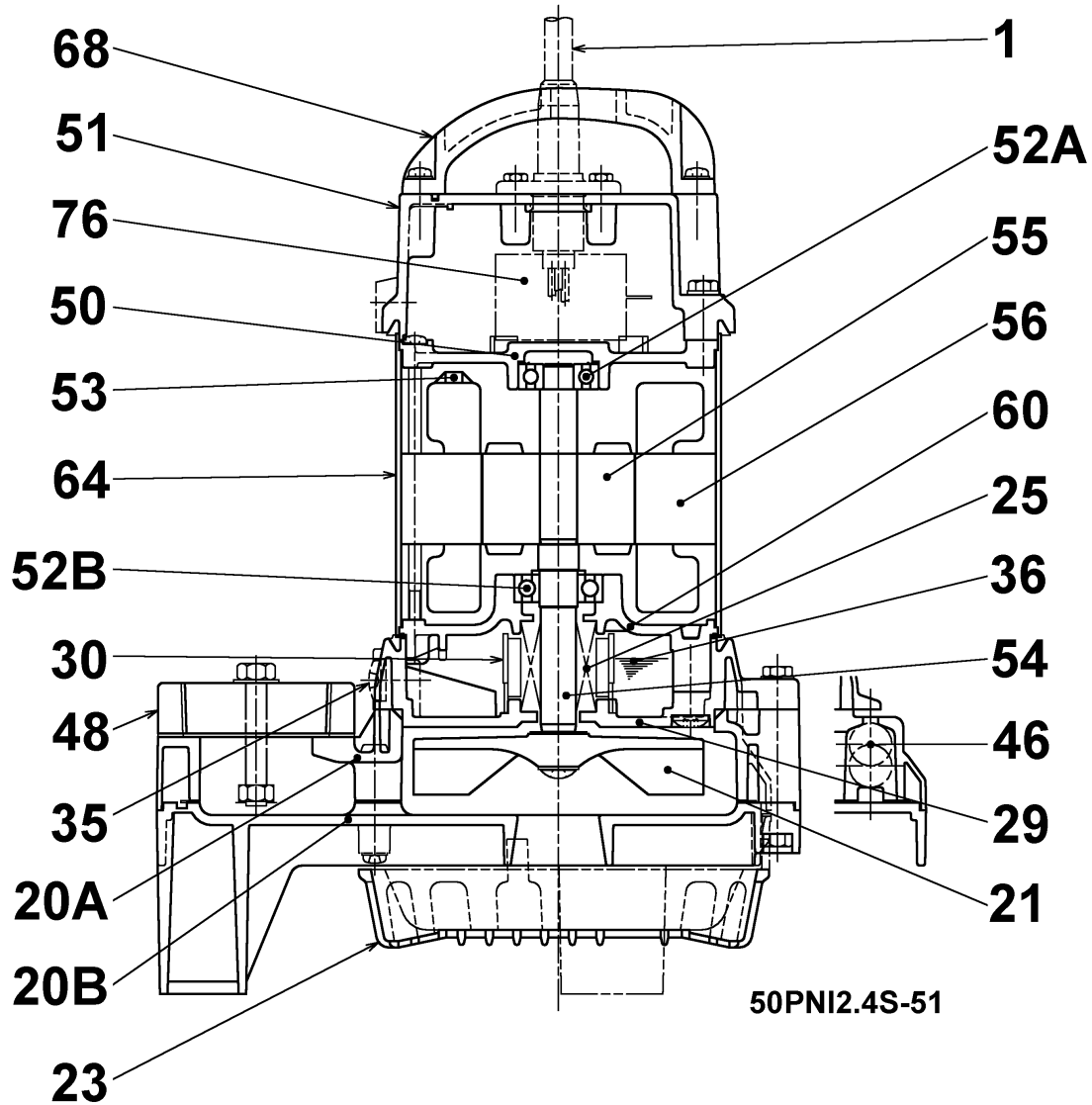


mm

**50PNI2.4S-51**

CWL: Continuous running water level  
LWL: Lowest running water level

# Sectional drawing 50PNI2.4S-51



No.	Description	Remark	No.	Description	Remark
1	Cable	H07RN-F	53	Motor Protector	.
20A	Upper Pump casing	ABS-GF20	54	Shaft	SUS403 (EN-X6Cr13)
20B	Lower Pump casing	ABS	55	Rotor	.
21	Impeller	PPO-GF20	56	Stator	.
23	Strainer	ABS	60	Bearing Housing	Aluminium die casting
25	Mechanical seal	W-14HL	64	Motor Frame	SUS304 (EN-X5CrNi18-10)
29	Oil casing	PPS-(GF+MD)50	68	Carrier handle	ABS
30	Oil distributor	Plastic	76	Condenser	.
35	Oil screw	SUS304 (EN-X5CrNi18-10)			
36	Lubricant	white oil (ISO VG32)			
46	Air vent valve	Glass bead			
48	Screwed Flange	PC(PBT-GF30)			
50	Motor cover	0			
51	Main cover	ABS-GF20			
52A	Upper bearing	6201ZZC3			
52B	Lower bearing	6202ZZC3			