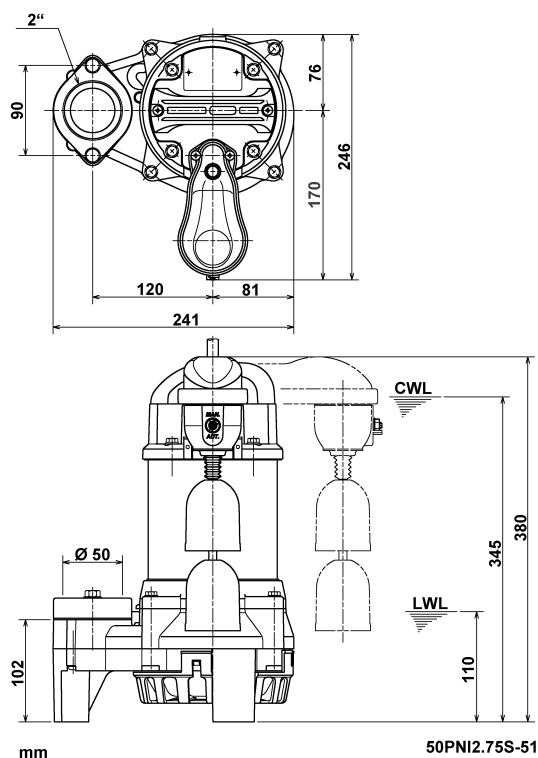
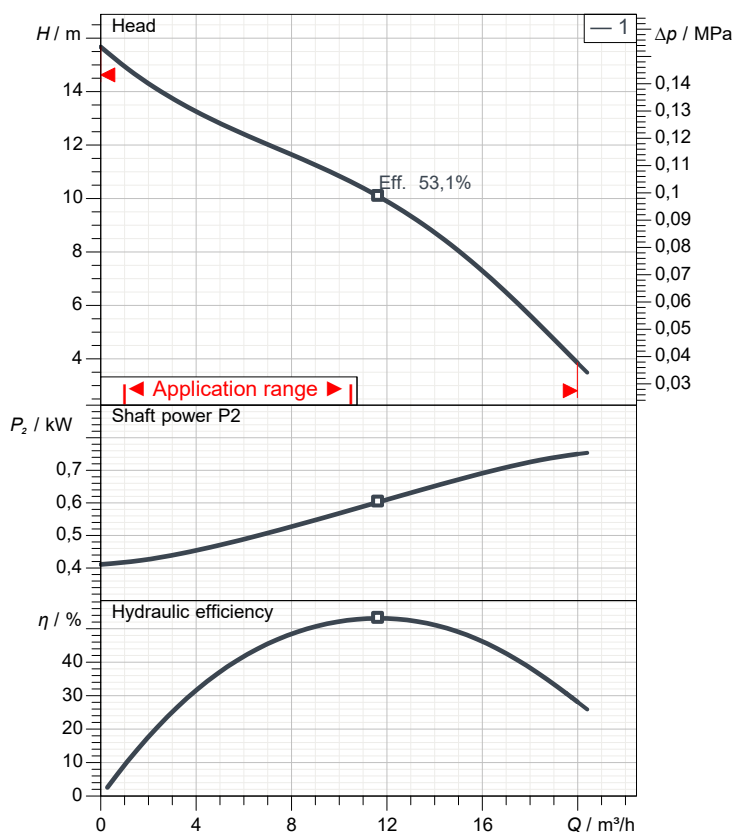


Data sheet 50PNI2.75S-51



CWL: Continuous running water level
LWL: Lowest running water level



Specification

Electric submersible pump PNI-series
Degree of protection IP 68
Pressure resistance max. 10 m
Type of impeller Vortex impeller
Free passage 10 mm
Suitable for:
sewage water, waste water, various waste water

Electric motor

Dry-type submersible induction motor
Insulation class E 2Poles 2.796 1/min
Starting mode
Rated voltage 230 V 50 Hz 1~
Power uptake 1,14 kW
Rated power 0,75 kW
Rated current 5,2 A
Start current 15,9 A

Cable

10m H07RN8-F 3Cx1mm²

Motor Protection

Circle thermal protector
(snap-action bi-metal device)

Shaft seal

Double inside mechanical seal in oil bath
additional lubrication by oil lifting device
Primary seal
Silicon carbide on ceramic
Secondary seal
Ceramic on carbon

Bearings

Shielded ball bearings, maintenance-free

Materials

Impeller	PPO-GF20
Motor Frame	SUS304 (EN-X5CrNi18-10)
Shaft	SUS403 (EN-X6Cr13)

Discharge size

50mm screwed-in mating flange

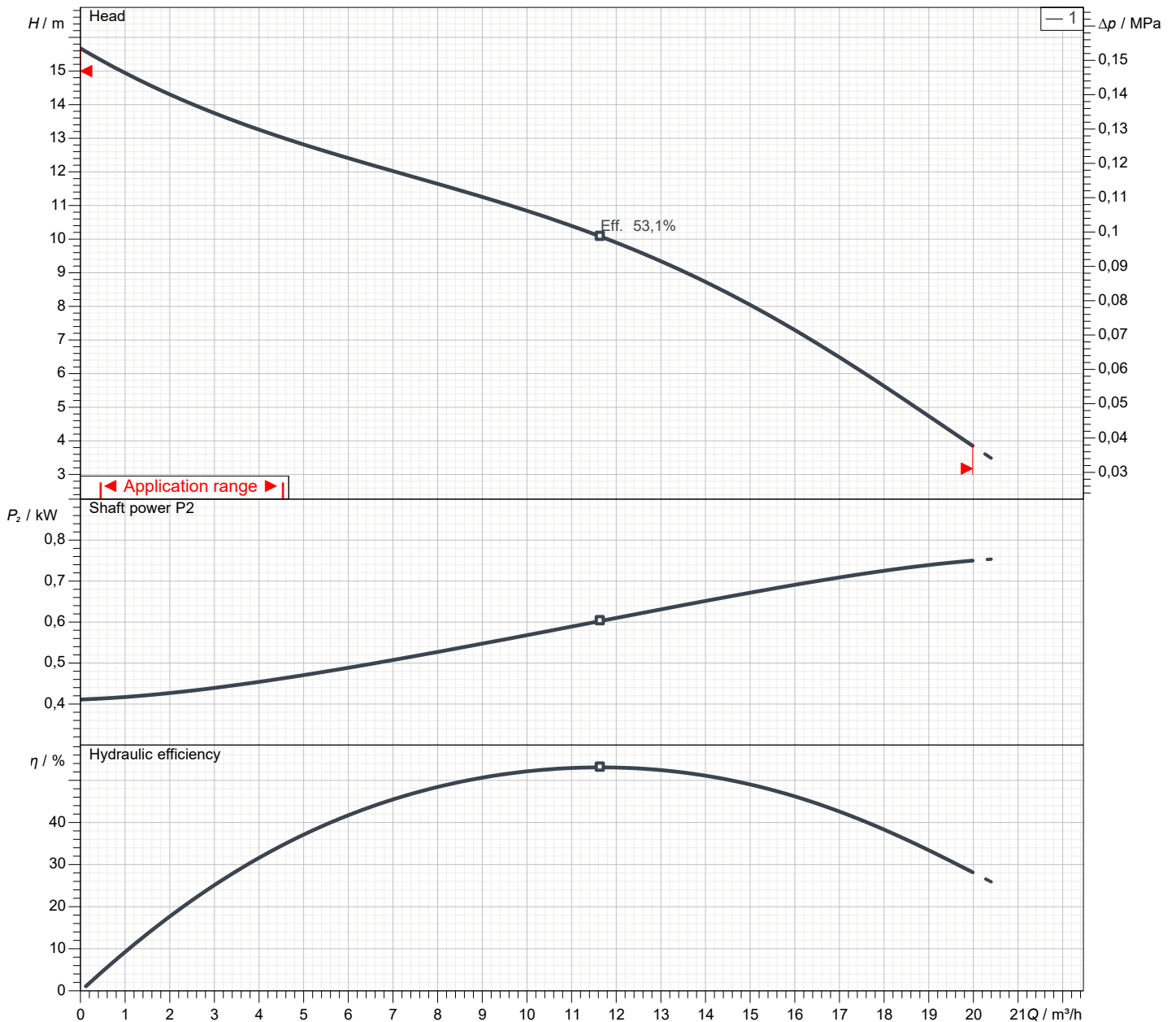
Weight

9,5 kg (dry weight of the pump only without cable)

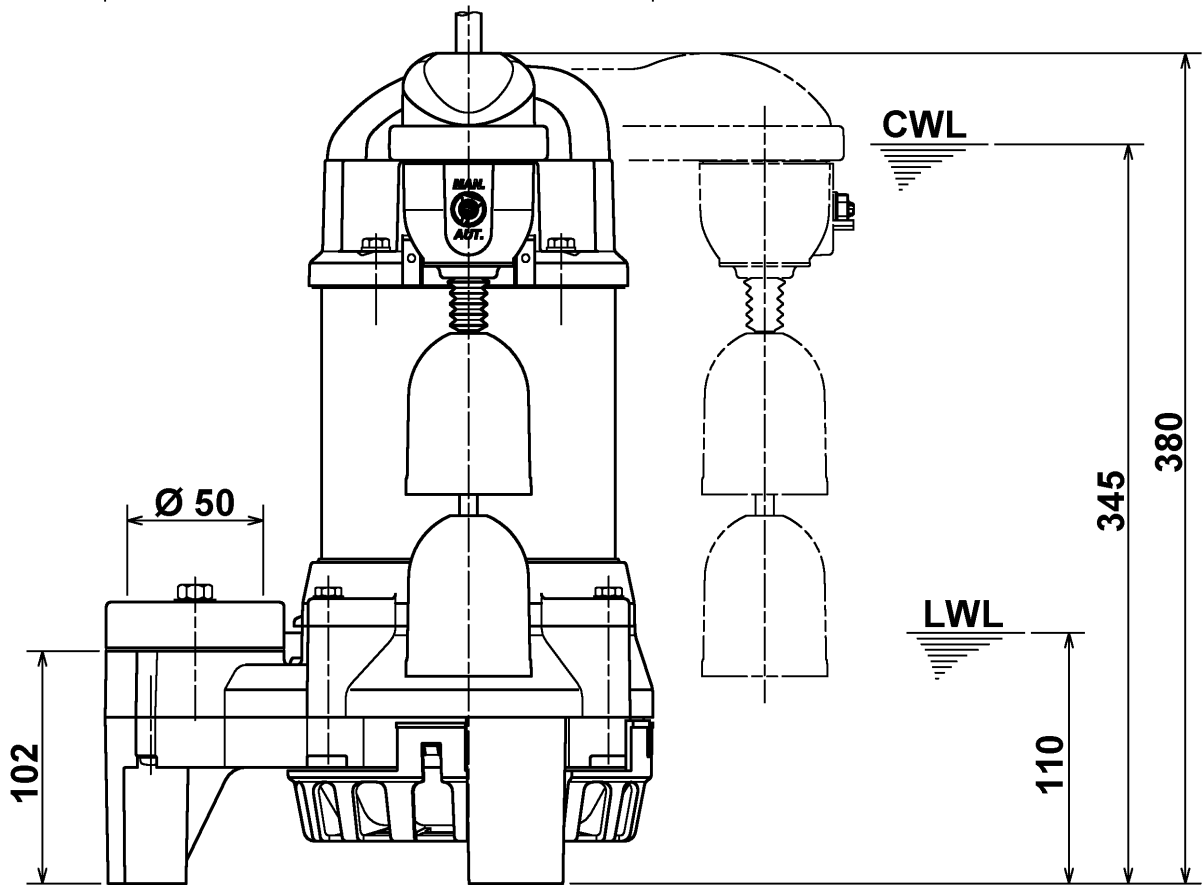
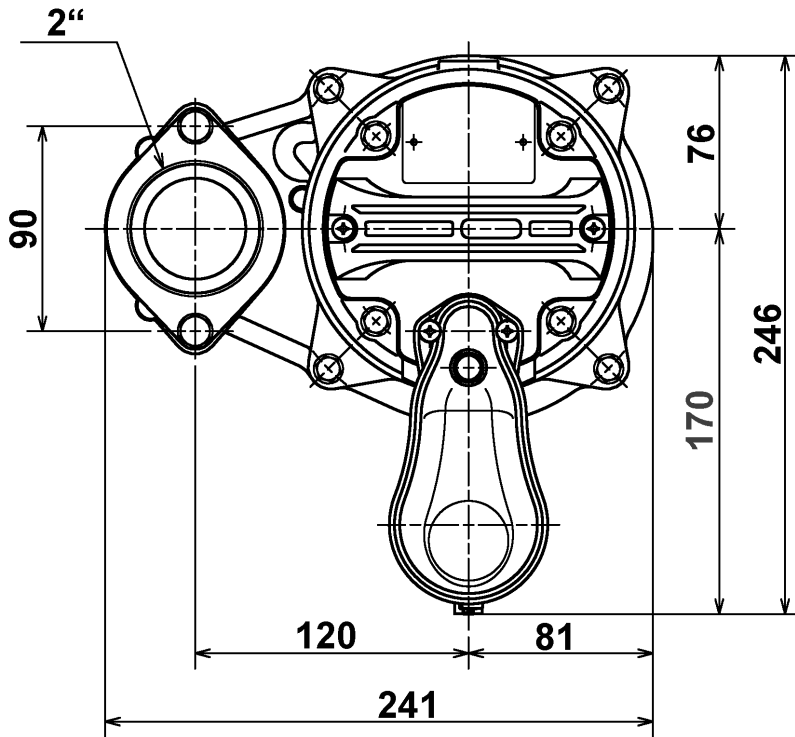
Performance curve

50PNI2.75S-51

Discharge port	2"
Head	15,7 m
Flow	20,0 m ³ /h
Rated power	0,75 kW
Power input	1,14 kW
Phases	1~
Voltages	230 V
Frequency	50 Hz
Rated current	5,2 A
Starting current	15,91 A
Number of poles	2
Speed	2.796 1/min
Starting mode	
Insulation class	E



Dimensions 50PNI2.75S-51

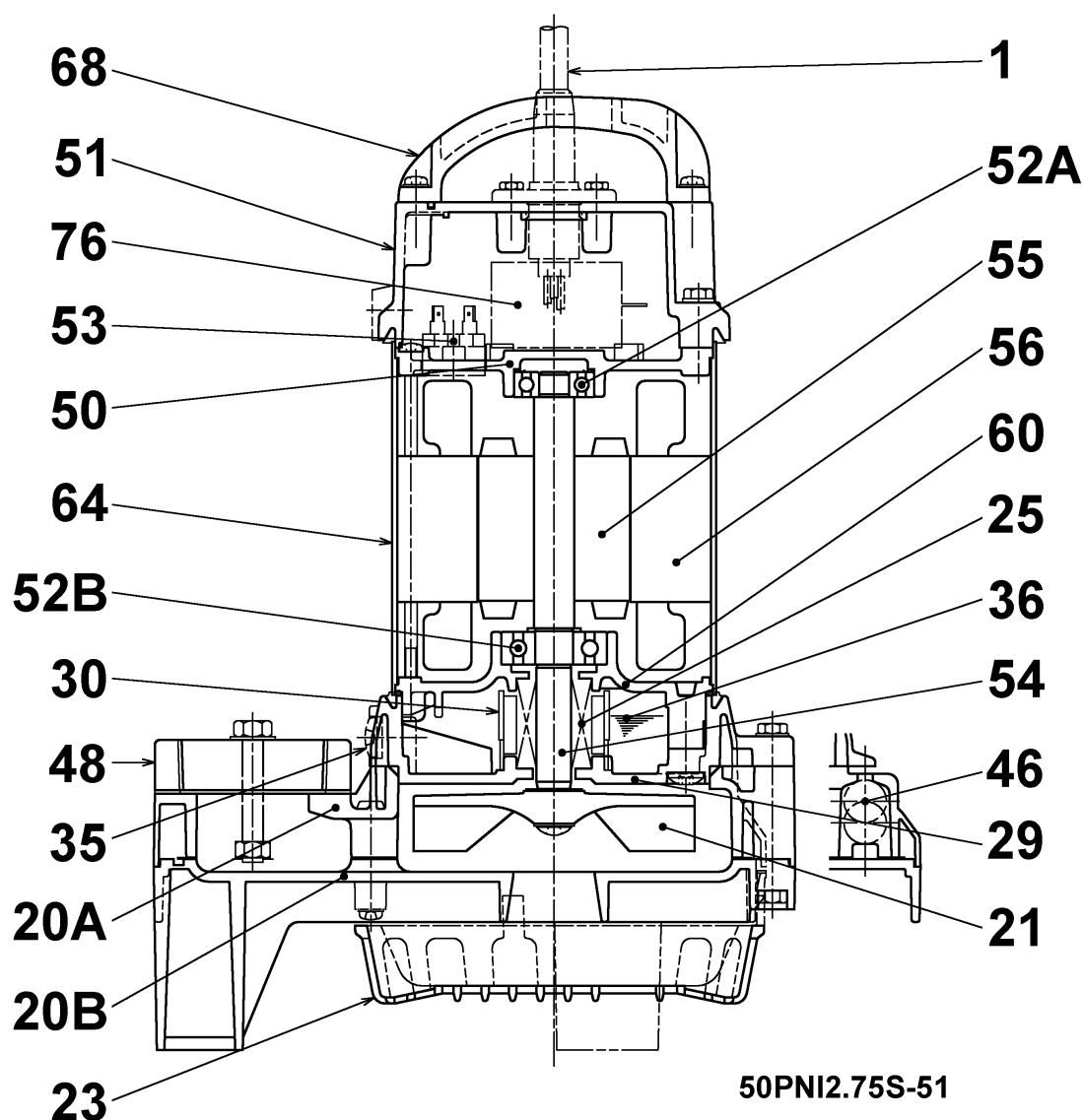


mm

50PNI2.75S-51

CWL: Continuous running water level
LWL: Lowest running water level

Sectional drawing 50PNI2.75S-51



50PNI2.75S-51

No.	Description	Remark	No.	Description	Remark
1	Cable	H07RN-F	53	TThermoschalter	.
20A	Upper Pump casing	ABS-GF20	54	Shaft	SUS403 (EN-X6Cr13)
20B	Lower Pump casing	ABS	55	Rotor	.
21	Impeller	PPO-GF20	56	Stator	.
23	Strainer	ABS	60	Bearing Housing	Aluminium die casting
25	Mechanical seal	W-14HL	64	Motor Frame	SUS304 (EN-X5CrNi18-10)
29	Oil casing	PPS-(GF+MD)50	68	Carrier handle	ABS
30	Oil distributor	Plastic	76	Condenser	.
35	Oil screw	SUS304 (EN-X5CrNi18-10)			
36	Lubricant	white oil (ISO VG32)			
46	Air vent valve	Glass bead			
48	Screwed Flange	PC(PBT-GF30)			
50	Motor cover	Aluminium die casting			
51	Main cover	ABS-GF20			
52A	Upper bearing	6201ZZC3			
52B	Lower bearing	6302ZZC3			