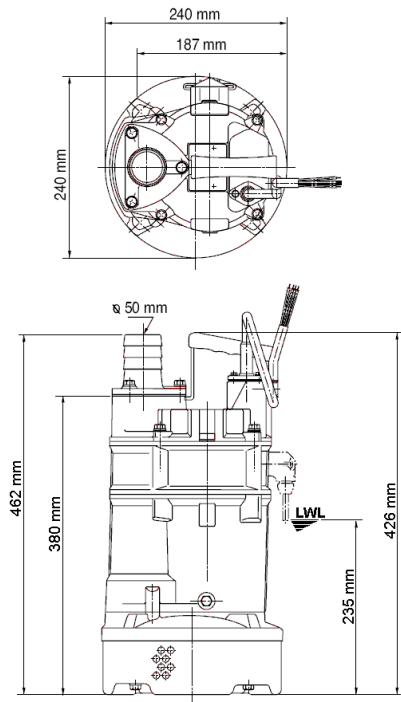
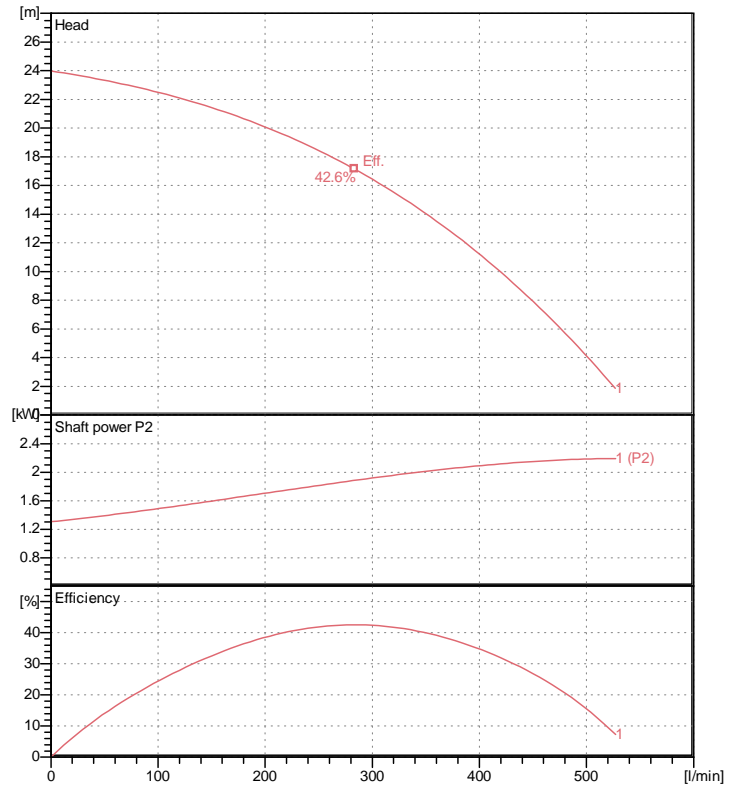


Data sheet KTVE22.2-51



KTVE22.2-51

CWL: Continuous running water level



Specification

Automatic electric submersible pump
 Degree of protection IP 68
 Depth of submersion max. 25 m
 Type of impeller semi-vortex
 Max. solid handling 8.5 mm
 Suitable for:
 rain water, ground water, sand water

Electric motor

Dry-type submersible induction motor
 Insulation class E 2Poles 2870 1/min
 Starting mode Directly
 Rated voltage 400 V 50 Hz 3~
 Power uptake 2.67 kW
 Rated power 2.20 kW
 Rated current 4.3 A
 Start current 30.0 A

Cable

20m NSSHÖU 4Cx1,5mm²

Motor Protection

Circle thermal protector
 (snap-action bi-metal device)

Shaft seal

Double inside mechanical seal in oil bath
 additional lubrication by oil lifting device
 Primary seal
 Silicon carbide on silicon carbide
 Secondary seal
 Silicon carbide on carbon

Bearings

Shielded ball bearings, maintenance-free

Materials

Impeller	FCD700 (EN-GJS-700-2)
Pump casing	Butadiene-/nitrile-rubber
Motor Frame	Aluminium alloy casting
Shaft	SUS403 (EN-X6Cr13)

Discharge size

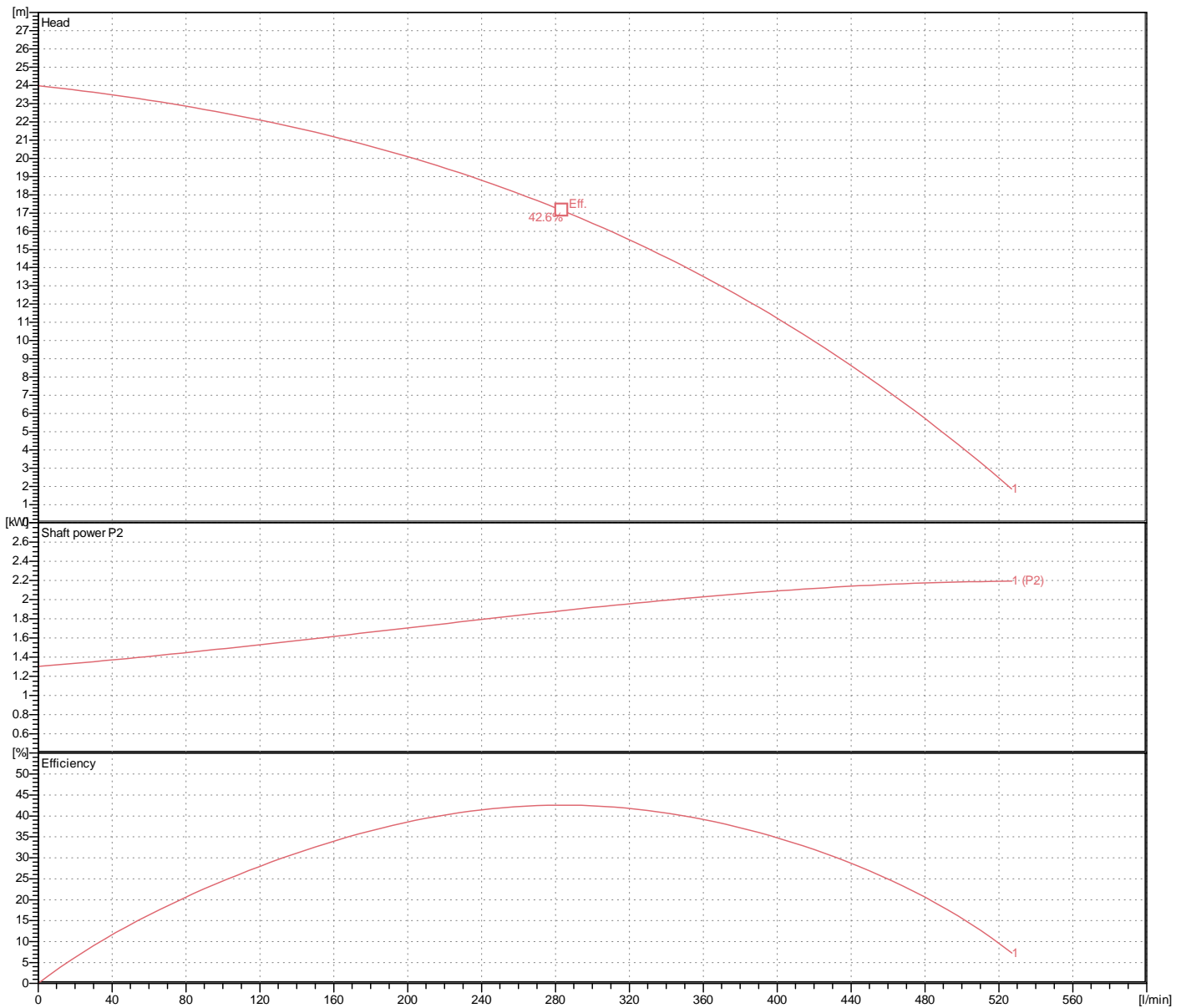
2" (50mm) BS-Coupling (threaded flange)

Weight

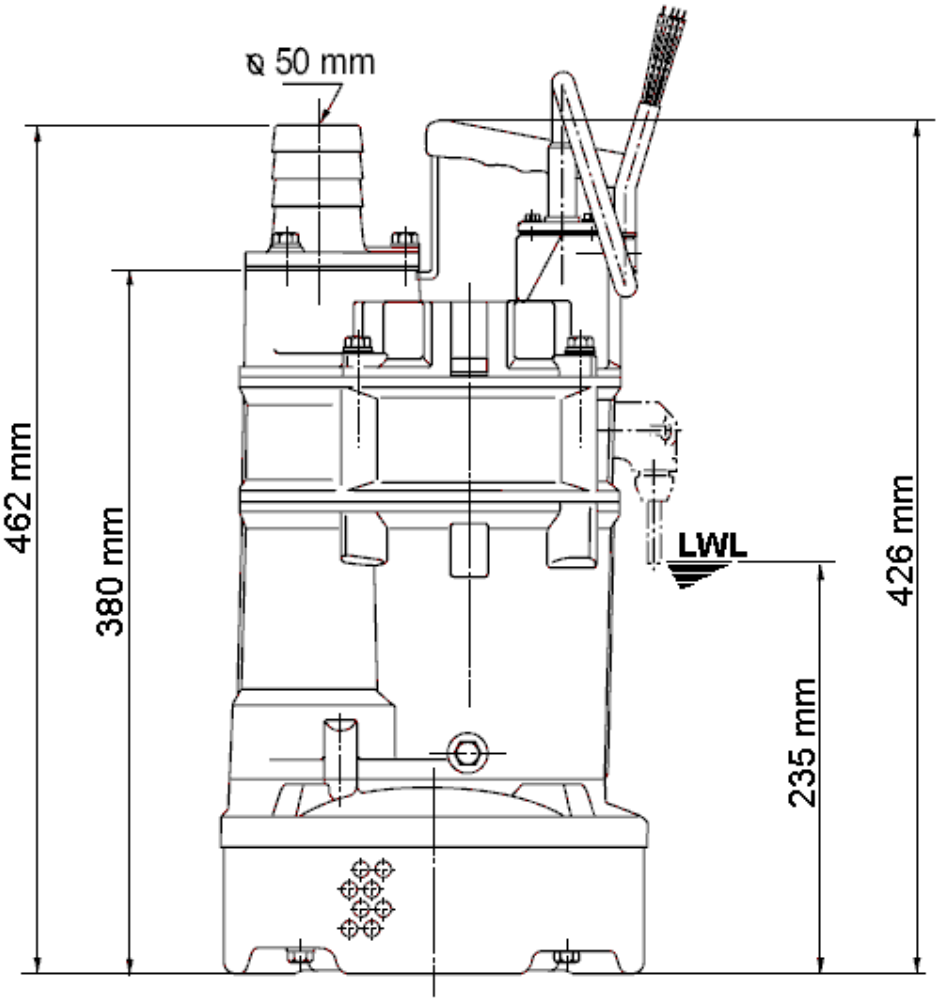
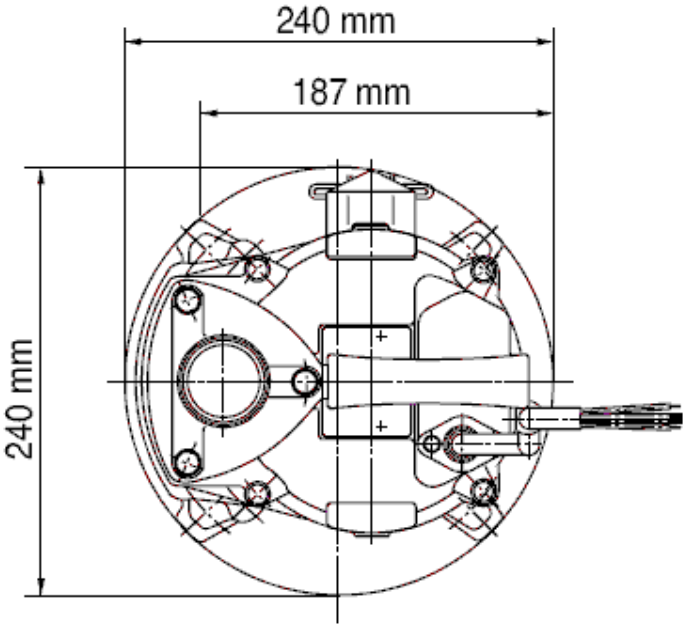
25 kg (dry weight of the pump only without cable)

Performance curve KTVE22.2-51

Discharge port	2"
Head	24.0 m
Flow	526.9 l/min
Rated power	2.20 kW
Power input	2.67 kW
Phases	3~
Voltages	400 V
Frequency	50 Hz
Rated current	4.3 A
Starting current	30.01 A
Number of poles	2
Speed	2870 1/min
Starting mode	Directly
Insulation class	E



Dimensions KTVE22.2-51



CWL: Continuous running water level

LWL: Lowest running water level

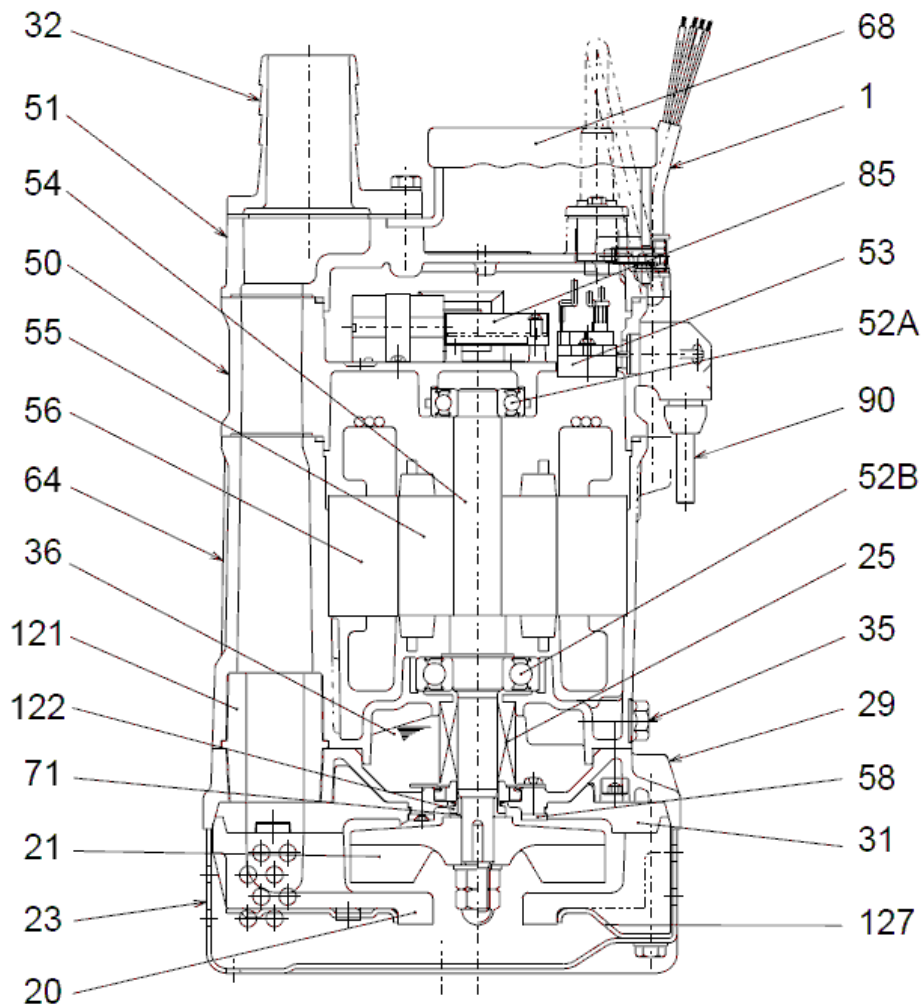
KTVE22.2-51



Tsurumi Europe GmbH
19.05.2017 V.18 / 1.10.2015

Heltorfer Str. 14 * 40472 Düsseldorf * Germany
Tel.: +49-211-4179373 sales@tsurumi.eu
Fax: +49-211-417937-480 www.tsurumi.eu

Sectional drawing KTVE22.2-51



KTVE22.2-51

No.	Description	Remark	No.	Description	Remark
1	Cable	20m NSSHÖU	55	Rotor	.
20	Pump casing	Butadiene-/nitrile-rubber	56	Stator	.
21	Impeller	FCD700 (EN-GJS-700-2)	58	Locking washer	SUS304 (EN-X5CrNi18-10)
23	Strainer	Steel plate	64	Motor Frame	Aluminium alloy casting
25	Mechanical seal	H-20	68	Handle	Steelplate + butadieneacrylnitrilerubber
29	Oil casing	Aluminium alloy casting	71	Shaft protection sleeve	SUS304 (EN-X5CrNi18-10)
31	Attrition plate	Butadiene-/nitrile-rubber	85	Relais	.
32	Discharge coupling	Aluminium alloy casting	90	Electrode	.
35	Oil screw	SUS304 (EN-X5CrNi18-10)	121	Wear protection	Styrene-butadiene-rubber
36	Lubricant	Turbine oil (ISO VG32)	122	V-ring	Butadieneacrylnitrilerubber
50	Motor cover	Aluminium alloy casting	127	Pressure plate	Steel plate
51	Main cover	Aluminium alloy casting			
52A	Upper bearing	6204ZZC3			
52B	Lower bearing	6305ZZC3			
53	Motor Protection	.			
54	Shaft	SUS403 (EN-X6Cr13)			