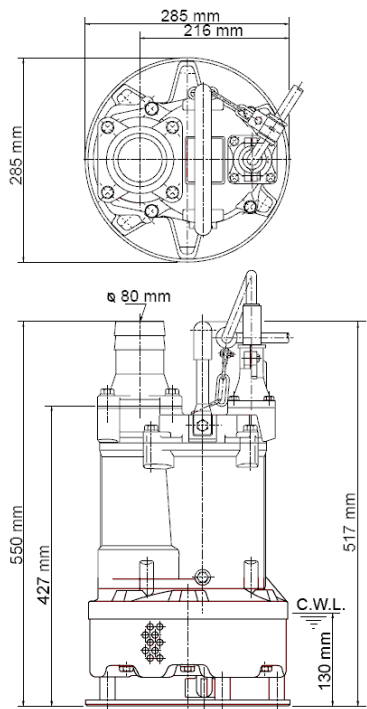
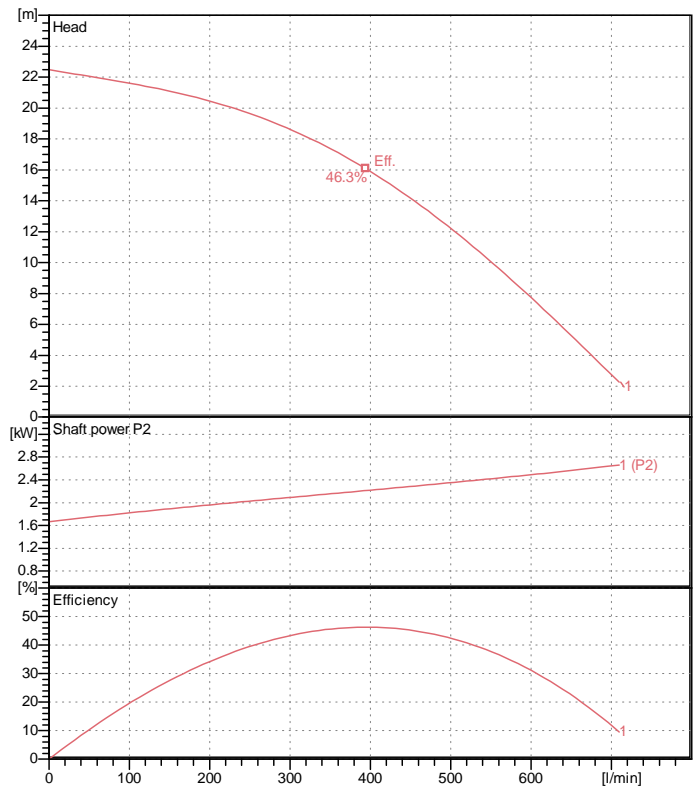


# Data sheet KTV2-80



KTV2-80

CWL: Continuous running water level



## Specification

Electric submersible pump  
 Degree of protection IP 68  
 Depth of submersion max. 25 m  
 Type of impeller semi-vortex  
 Max. solid handling 10 mm  
 Suitable for:  
 sludge, slurry, waste water

## Electric motor

Dry-type submersible induction motor  
 Insulation class E 2Poles 2875 1/min  
 Starting mode Directly  
 Rated voltage 400 V 50 Hz 3~  
 Power uptake 3.66 kW  
 Rated power 3.00 kW  
 Rated current 6.1 A  
 Start current 48.0 A

## Cable

20m NSSHÖU 4Cx1,5mm<sup>2</sup>

## Motor Protection

Circle thermal protector  
 (snap-action bi-metal device)

## Shaft seal

Double inside mechanical seal in oil bath  
 additional lubrication by oil lifting device

Primary seal

Silicon carbide on silicon carbide

Secondary seal

Silicon carbide on silicon carbide

## Bearings

Shielded ball bearings, maintenance-free

## Materials

|             |                         |
|-------------|-------------------------|
| Impeller    | Chromium iron casting   |
| Agitator    | FCD700 (EN-GJS-700-2)   |
| Pump casing | Synthetic rubber        |
| Motor Frame | Aluminium alloy casting |
| Shaft       | SUS403 (EN-X6Cr13)      |

## Discharge size

3" (80mm) BS-coupling (threaded flange)

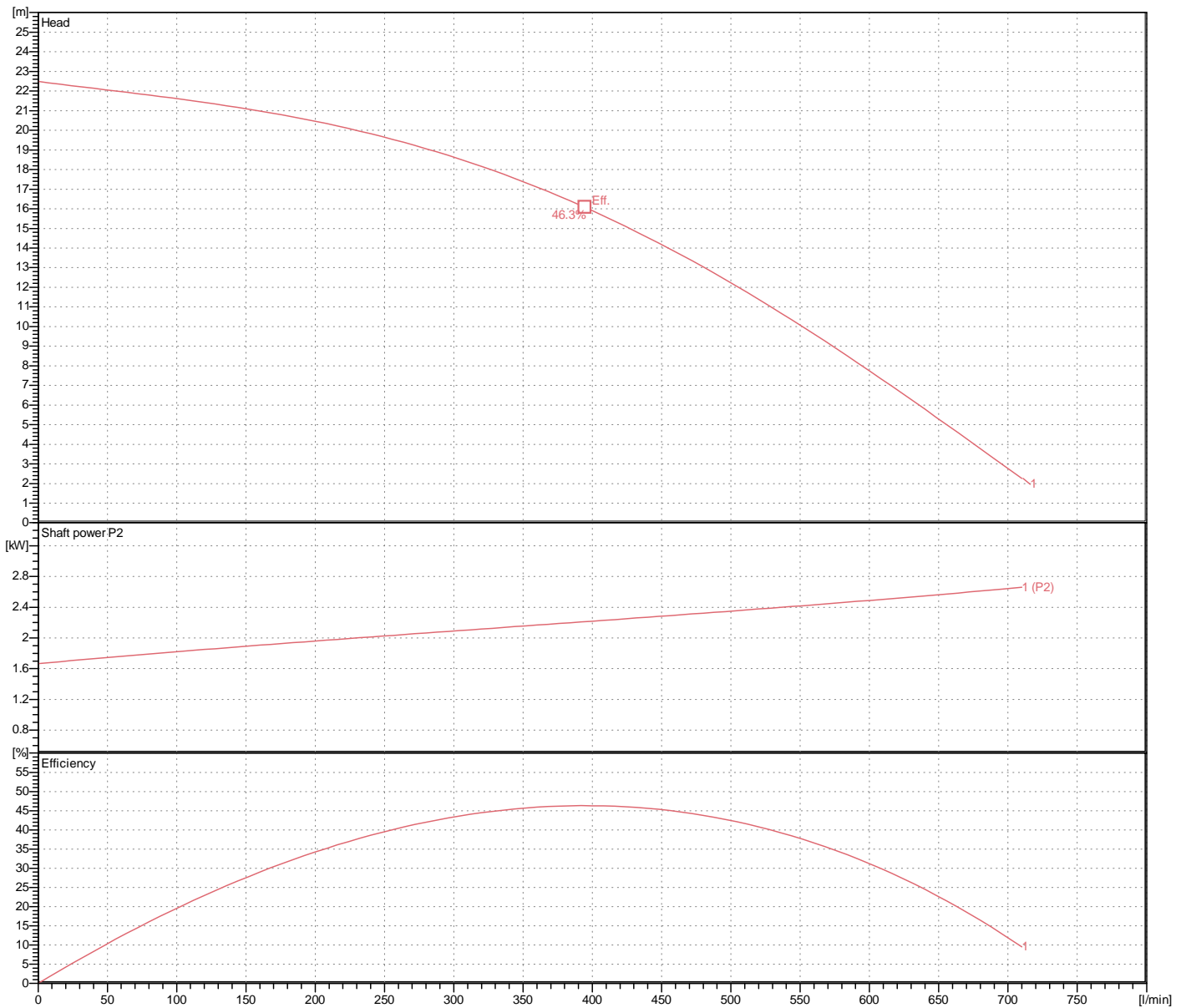
## Weight

38 kg (dry weight of the pump only without cable)

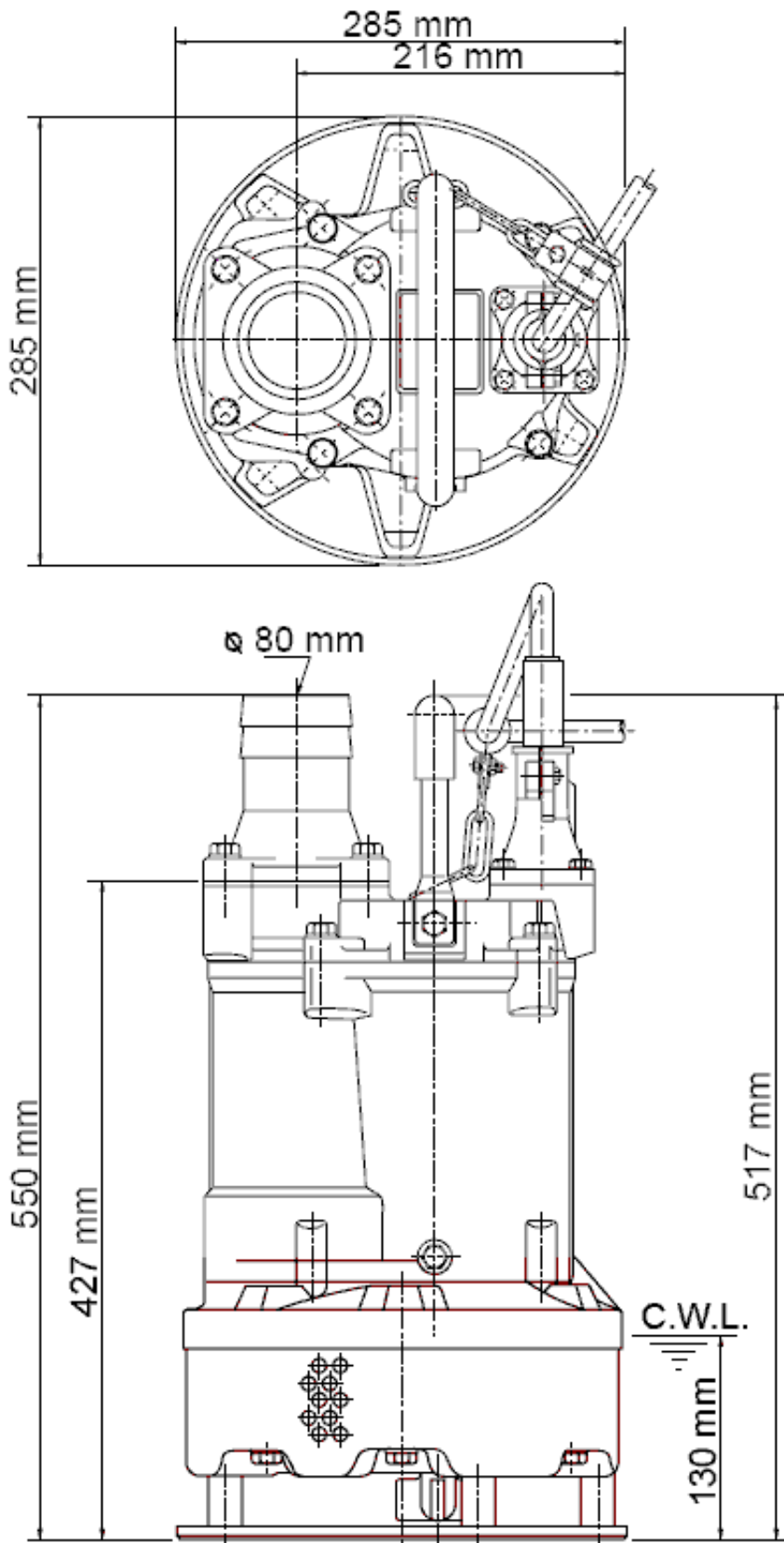
# Performance curve

## KTV2-80

|                  |             |
|------------------|-------------|
| Discharge port   | 3"          |
| Head             | 22.5 m      |
| Flow             | 709.9 l/min |
| Rated power      | 3.00 kW     |
| Power input      | 3.66 kW     |
| Phases           | 3~          |
| Voltages         | 400 V       |
| Frequency        | 50 Hz       |
| Rated current    | 6.1 A       |
| Starting current | 48.01 A     |
| Number of poles  | 2           |
| Speed            | 2875 1/min  |
| Starting mode    | Directly    |
| Insulation class | E           |



# Dimensions KTV2-80



**KTV2-80**

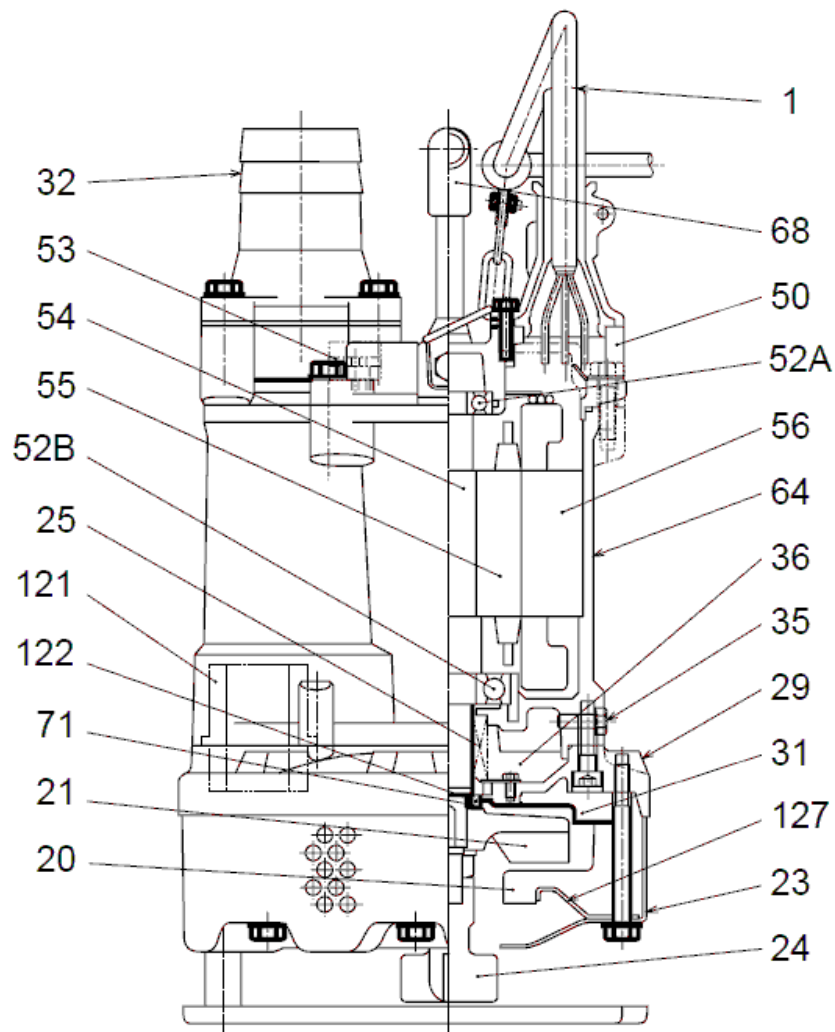
CWL: Continuous running water level  
LWL: Lowest running water level

 **TSURUMI PUMP**

Tsurumi Europe GmbH  
03.04.2018 V.18 / 1.10.2015

Helthorfer Str. 14 \* 40472 Düsseldorf \* Germany  
Tel.: +49-211-4179373 sales@tsurumi.eu  
Fax: +49-211-417937-480 www.tsurumi.eu

# Sectional drawing KTV2-80



**KTV2-80**

| No. | Description                  | Remark                  | No. | Description             | Remark                                   |
|-----|------------------------------|-------------------------|-----|-------------------------|--|
| 1   | Cable                        | 20m NSSHÖU              | 55  | Rotor                   | .  |
| 20  | Pump casing                  | Synthetic rubber        | 56  | Stator                  | .  |
| 21  | Impeller                     | Chromium iron casting   | 64  | Motor Frame             | Aluminium alloy casting                  |
| 23  | Strainer                     | Steel plate             | 68  | Handle                  | Steelplate + butadieneacrylnitrilerubber |
| 24  | Agitator                     | FCD700 (EN-GJS-700-2)   | 71  | Shaft protection sleeve | SUS304 (EN-X5CrNi18-10)                  |
| 25  | Mechanical seal              | H-25                    | 121 | Wear protection         | Synthetic rubber                         |
| 29  | Oil casing                   | Aluminium alloy casting | 122 | V-ring                  | Butadieneacrylnitrilerubber              |
| 31  | Attrition plate              | Synthetic rubber        | 127 | Pressure plate          | Steel plate                              |
| 32  | Discharge coupling           | Aluminium alloy casting |     |                         |  |
| 35  | Oil screw                    | SUS304 (EN-X5CrNi18-10) |     |                         |  |
| 36  | Lubricant                    | Turbine oil (ISO VG32)  |     |                         |  |
| 50  | Main cover                   | Aluminium alloy casting |     |                         |  |
| 52A | Upper bearing                | 6304ZZC3                |     |                         |  |
| 52B | Lower bearing                | 6306ZZC3                |     |                         |  |
| 53  | Motor Protector 380/400/415V | 50Hz KA314-HRXL00 (H.C) |     |                         |  |
| 54  | Shaft                        | SUS403 (EN-X6Cr13)      |     |                         |  |