

## Solids handling 'S' pump

### Pump end specification

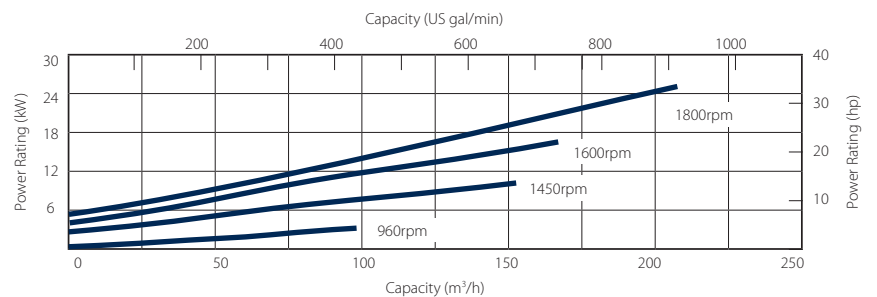
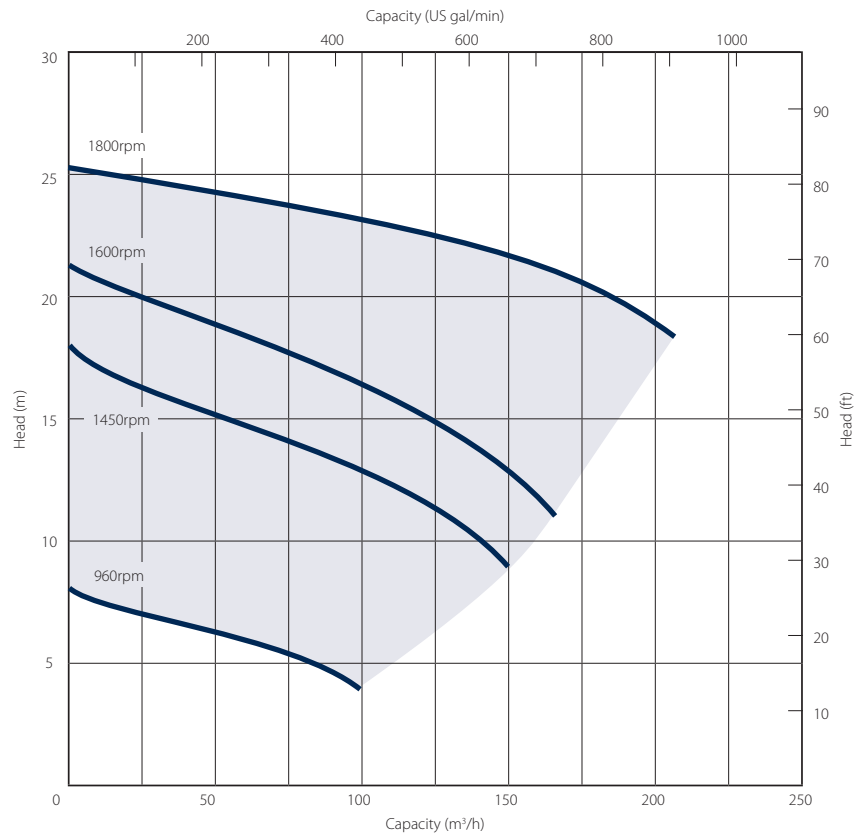
	Metric	US
Capacity	207 m <sup>3</sup> /h	911 gpm
Total Head	25 m	82 ft
Max. Solids Size	75 mm	3 in
Self Priming Lift	8.8 m	28 ft
Air Handling	24 l/s	50 cfm
Selprime®	2.2 kW	3 hp
Absorbs		
Power Required	16 kW	21 hp
Pump Speed Max.	1800 rpm	1800 rpm
Impeller Type	Vortex	Vortex
Impeller Blades	6	6
Impeller Diameter	215 mm	8.5 in
Inlet Port	DN 100 PN6	4 in
Outlet Port	DN 100 PN6	4 in

### Priming method - Selprime®

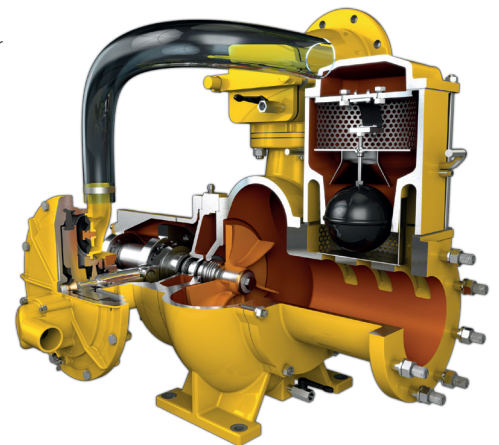
The unique original Selwood self priming system utilising a water tolerant diaphragm air pump. An environmentally friendly design that has none of the problems of oil vapour emissions and oil emulsification associated with other priming systems.

### Pump end materials

Pump Casing	Grey Iron BSEN 1561 Grade EN-GJL-200
Impeller	Cast Iron BSEN 1563 Grade EN-GJS-450-10
Wear Plates	NA
Shaft	Steel BS EN 10277 Grade C40+C
NRV Body	Grey Iron BSEN 1561 Grade EN-GJL-200
Mechanical Seal	Ceramic v Silicon Carbide
Pump End Bearing	Ball
Drive End Bearing	Cylindrical Roller



**Please note:** The above curves cover the complete range and ability of the pump unit. Actual performance will be subject to the engine / motor indicated overleaf and medium pumped.



## Solids handling 'S' pump

Our 'S Range' pumps are the market-leader when it comes to solids handling.

The vortex-flow design (Seltorque®), Selprime® automatic self-priming, emission compliant engines and ease of operation means trouble-free pumping of

- raw and unscreened sewage
- sludge or slurry
- water with fine and large solids
- water containing rags and fibres



Standard builds	Deutz Skid*		Isuzu Super Silent	
	Metric	US	Metric	US
Length	175 cm	69 in	241 cm	95 in
Width	100 cm	39 in	163 cm	64 in
Height	129 cm	51 in	172 cm	68 in
Dry Weight	845 kg	1863 lb	1620 kg	3571 lb
Gross Weight	933 kg	2057 lb	1802 kg	3973 lb
Sound Power	109 LWA		87 LWA	
Sound Pressure @ 1m (3ft)	89 db(A)		65 db(A)	
Sound Pressure @ 7m (23ft)	84 db(A)		56 db(A)	
Engine	Deutz D2011L03i		Isuzu 4LE2T or 4LE1	
Emission Rating	Stage IIIA	NA	Stage IIIA	NA
Engine / Motor Speed - Max	1600 rpm		1600 rpm	
Engine / Motor Speed - Min	960 rpm		960 rpm	
Fuel Tank Capacity.**	105 lt	28 US gal	219 lt	58 US gal
BEP - Fuel Consumption	3.2 lt/hr	0.85 US gal/hr	3.1 lt/hr	0.68 US gal/hr

\*Open sets exclude fittings

\*\* Fuel tank capacity can be increased with the addition of an auxiliary fuel tank.

Installation drawings are available upon request.

### Optional extras

- Training
- Genuine parts kits
- Valves / Fittings
- Pump accessories
- Hose / pipework
- Auto stop/start control panels
- Pump telemetry
- Oil drain kit
- Bulk fuel kit
- Tanks & filtration
- Pipe stoppers
- Chalwyn valve & spark arrestor

**SELWOOD**  
www.selwood.co.uk

UK Rental  
03330 142000

UK Sales  
023 8025 0137

International Sales  
+44 23 8025 0137

Head Office Bournemouth Road, Chandler's Ford, Eastleigh, Hampshire, SO53 3ZL. T 023 8026 6311 E info@selwood.co.uk

# Solids handling 'S' pump

Our 'S Range' pumps are the market-leader when it comes to solids handling.

The vortex-flow design (Seltorque®), Selprime® automatic self-priming, emission compliant engines and ease of operation means trouble-free pumping of

- raw and unscreened sewage
- sludge or slurry
- water with fine and large solids
- water containing rags and fibres



Standard builds	Static		Super Silent		Static		Skid*		Super Silent	
	Metric	US	Metric	US	Metric	US	Metric	US	Metric	US
Length	139 cm	55 in	200 cm	79 in	160 cm	63 in	182 cm	72 in	241 cm	95 in
Width	74 cm	29 in	131 cm	52 in	71 cm	28 in	100 cm	39 in	163 cm	64 in
Height	87 cm	34 in	160 cm	63 in	90 cm	35 in	114 cm	45 in	172 cm	68 in
Gross Weight	380 kg	838 lb	1100 kg	2425 lb	500 kg	1144 lb	690 kg	1521 lb	1500 kg	3307 lb
	380 kg	838 lb	1100 kg	2425 lb	500 kg	1144 lb	690 kg	1521 lb	1500 kg	3307 lb
Sound Power	93 LWA		79 LWA		102 LWA		100 LWA		96 LWA	
Sound Pressure @ 1m (3ft)	73 db(A)		56 db(A)		94 db(A)		78 db(A)		75 db(A)	
Sound Pressure @ 7m (23ft)	66 db(A)		52 db(A)		77 db(A)		69 db(A)		65 db(A)	
Motor	7.5 kW 400/3/50	10 hp	7.5 kW 400/3/50	10 hp	18.5kW 400/3/50	25 hp	22 kW 400/3/50	29 hp	22 kW 400/3/50	29 hp
Electrical Rating	IE3	-	IE3	-	IE3	-	IE3	-	IE3	-
Motor Speed - Max	<b>1450 rpm</b>		<b>1450 rpm</b>		<b>1500 rpm</b>		<b>1800 rpm</b>		<b>1800 rpm</b>	
Motor Speed - Min	<b>960 rpm</b>		<b>960 rpm</b>		<b>960 rpm</b>		<b>960 rpm</b>		<b>960 rpm</b>	

\*Open sets exclude fittings

Installation drawings are available upon request.

### Optional extras

- Training
- Genuine parts kits
- Valves / Fittings
- Pump accessories
- Hose / pipework
- DOL panels
- Soft Start panels
- Variable speed drive panels
- Tanks & filtration
- Pipe stoppers