

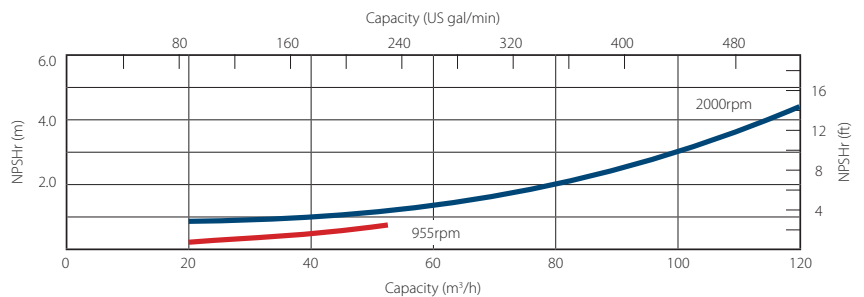
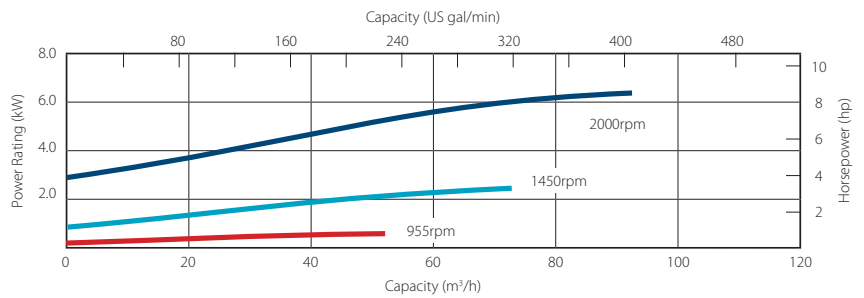
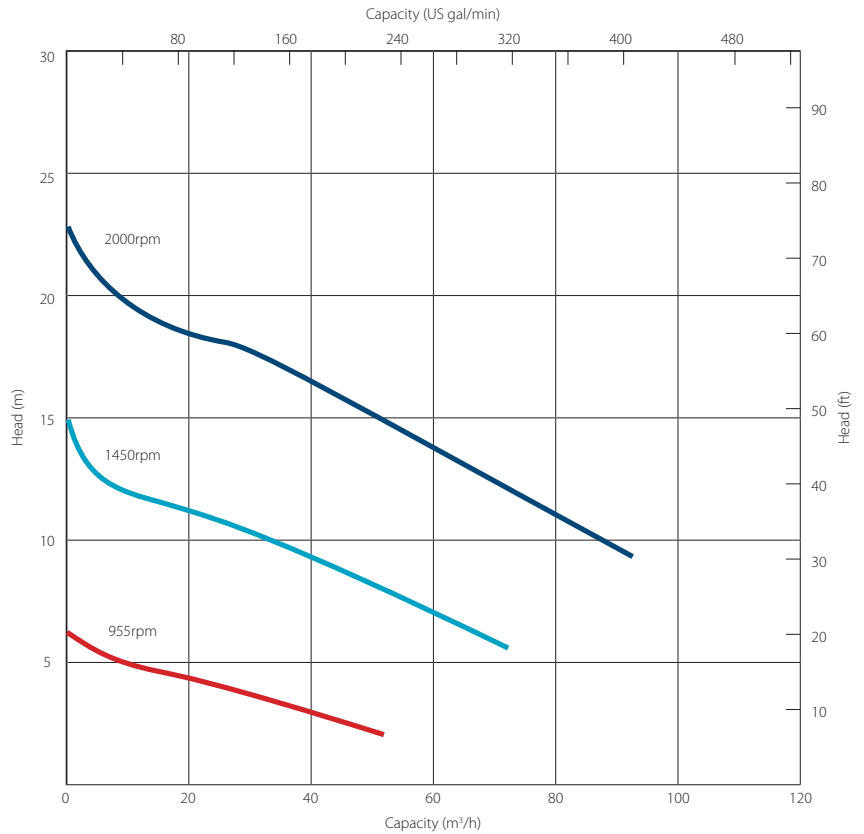
High volume drainer 'D' pump

Pump end specification		
	Metric	US
Capacity	90 m ³ /h	396 gpm
Total Head	23 m	75 ft
Max. Solids Size	29 mm	1.14 in
Self Priming Lift	8.8 m	29 ft
Air Handling	4.25 l/s	8.8 cfm
Selprime® Absorbs	0.9 kW	1.2 hp
Power Required	6.5 kW	9 hp
Pump Speed Max.	2000	2000
Pump Speed Min.	955	955
Impeller Type	Drainer	Drainer
Impeller Blades	3	3
Impeller Diameter	192 mm	7.6 in
Inlet Port	DN 80 PN6	3 PN6
Outlet Port	DN 80 PN6	3 PN6
Length	81 cm	32 in
Width	43 cm	16.9 in
Height	58 cm	22.8 in
Weight	162 Kg	357 lb

Priming method - Selprime®

The unique original Selwood self priming system utilising a water tolerant diaphragm air pump. An environmentally friendly design that has none of the problems of oil vapour emissions and oil emulsification associated with other priming systems.

Pump end materials	
Pump Casing	Grey Iron BSEN 1561 Grade EN-GJL-250
Impeller	Cast Iron BSEN 1563 Grade EN-GJS-450-10
Wear Plates	Cast Iron BSEN 1563 Grade EN-GJS-600-3
Shaft	Steel BS En 10277 Grade C40+C
NRV Body	Grey Iron BSEN 156 Grade EN-GJL-250
Mechanical Seal	Ceramic / Sealide
Pump End Bearing	Ball
Drive End Bearing	Cylindrical Roller



High volume drainer 'D' pump builds

Our 'D Pumps' offer high efficiency centrifugal pumps for high-volume fluid transfer.

Handling flows of up to 90 m³/h, these highly efficient Selprime[®] pumps offer emission compliant engines, are easy to operate and maintain and have a robust construction.

Perfect for use with

- S** water – clean, with fine or larger solids
- S** screened sewage



Standard builds	2 Wheel Site*		Super Silent		Electric Static	
	Metric	US	Metric	US	Metric	US
Length	194 cm	76 in	176 cm	69 in	125 cm	49 in
Width	100 cm	39 in	114 cm	45 in	67 cm	26 in
Height	129 cm	51 in	157 cm	62 in	78 cm	31 in
Dry Weight	520 kg	1146 lbs	957 kg	2110 lb	350 kg	772 lb
Gross Weight	550 kg	1213 lbs	1025 kg	2260 lb	350 kg	772 lb
Sound Power	101 LWA		90 LWA		90 LWA	
Sound Pressure @ 1m (3ft)	79 db(A)		70 db(A)		79 db(A)	
Sound Pressure @ 7m (23ft)	70 db(A)		61 db(A)		62 db(A)	
Pump SAE Size	SAE 6 modified		SAE 6 modified		bare shaft	
Motor	Isuzu 2CA1		Isuzu 2CA1		7.5 kW (10hp) 400/3/50	
Emission Rating	EPA Tier 4 Final		EPA Tier 4 Final		-	
Engine / Motor Max Speed	2000 rpm		2000 rpm		2000 rpm	
Fuel Tank Capacity.**	36 lt	9.5 US gal	80 lt**	21.1 US gal	-	-
BEP - Fuel Consumption	1.7 lt/hr	0.45 US gal/hr	1.7 lt/hr	0.45 US gal/hr	-	-

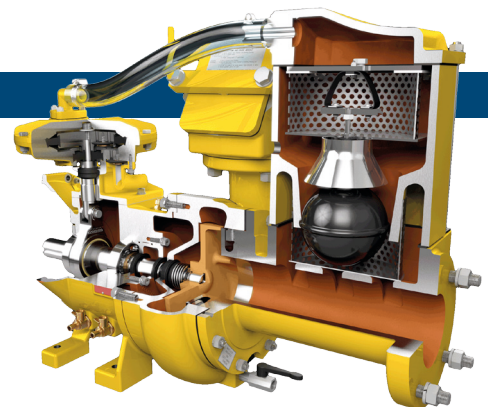
*Open sets exclude fittings

** Fuel tank capacity can be increased with the addition of an auxiliary fuel tank.

Installation drawings are available upon request.

Optional extras

- | | |
|--------------------------------|----------------------------------|
| Training | Oil drain kit |
| Genuine parts | Hose / pipework |
| Valves / Fittings | DOL panels |
| Pump accessories | Soft Start panels |
| Tanks & filtration | Variable speed drive panels |
| Auto stop/start control panels | Ultra-sonic level control panels |
| Pump telemetry | |



SELWOOD
www.selwood.co.uk

Bournemouth Road
Chandler's Ford, Eastleigh
Hampshire
SO53 3ZL UK

T +44(0) 23 8026 6311
E info@selwood.co.uk