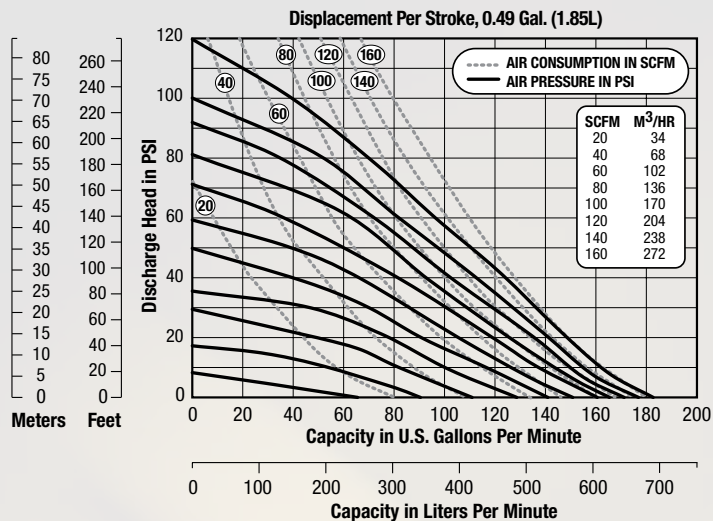


2" Ultra-Matic Metallic Clamped

U2

Performance



NOTE: Performance based on the following: elastomeric fitted pump, flooded suction, water at ambient conditions. The use of other materials and varying hydraulic conditions may result in deviations in excess of 5%.

Specifications

Flow Rate

Adjustable to 0-182 gpm (689 lpm)

Port Size

Suction 2" Female NPT (BSP)

Discharge 2" Female NPT (BSP)

Air Inlet 1/2" NPT

Air Exhaust 3/4" NPT

Suction Lift (Dry)

Rubber 20' (6.10 m)

PTFE 10' (3.05 m)

Max Solid Size (Diameter)

..... 1/2" (6 mm)

Shipping Weights

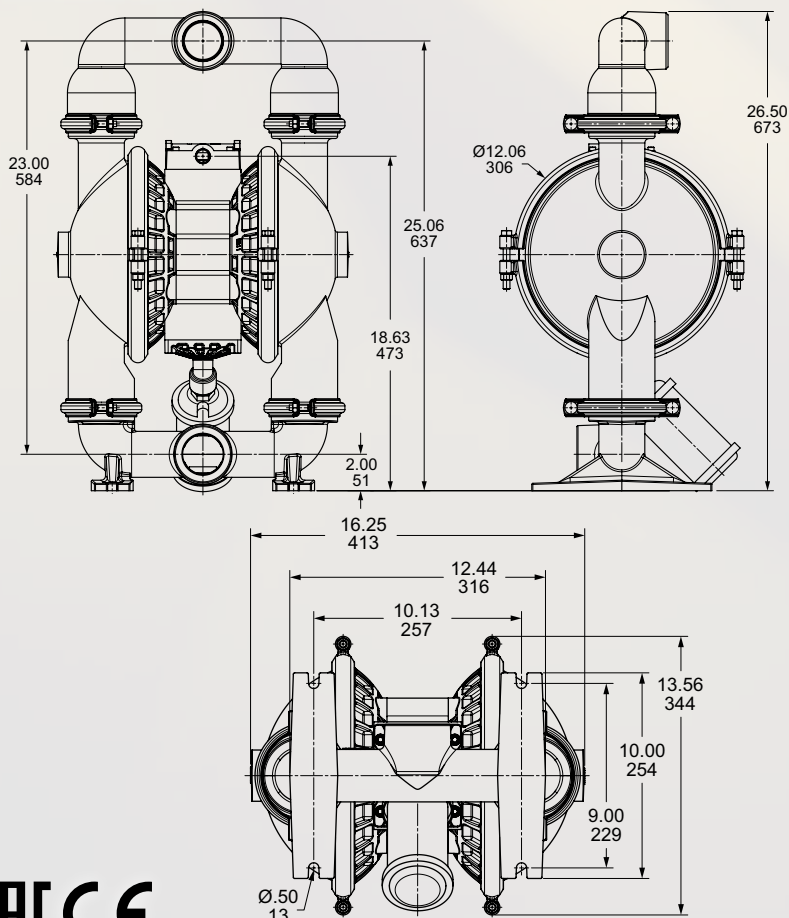
Aluminum 69 lbs (31 kg)

Cast Iron 114 lbs (52 kg)

Hastelloy C 124 lbs (56 kg)

Stainless Steel 114 lbs (52 kg)

Dimensions



EAC CE

VERSAMATIC

Warren Rupp, Inc. • A Unit of IDEX Corporation
 800 North Main Street, Mansfield, OH 44902 USA
 Phone: 419.526.7296 • Fax: 419.526.7289 • www.versamatic.com

u2msmC-rev0817