



Technical specification

Submersible pump C 3140, 50 Hz



Flygt





C 3140

Product

Submersible pump for pumping clean water, surface water and waste water containing solids or long-fibred material.

Denomination

Product code 3140.180
 Installation P, S
 Impeller characteristics LT, MT, HT,

Process data

Liquid temperature max +40 °C
 Depth of immersion max 20 m
 The pH of the pumped liquid pH 5,5-14
 Liquid density max. 1100 kg/m³
 Impeller throughlet See Motor rating table

Motor data

Frequency 50 Hz
 Insulation class H (+180 °C)
 Voltage variation
 - continuously running max ± 5%
 - intermittent running max ± 10%
 Voltage imbalance between phases max 2%
 No. of starts/hour max 30

Cable

Direct-on-line start

SUBCAB® 4G2,5+2x1,5 mm²
 4G4+2x1,5 mm²
 4G6+2x1,5 mm²

Y/D start

SUBCAB® 7G2,5+2x1,5 mm²
 7G4+2x1,5 mm²
 7G6+2x1,5 mm²

Monitoring equipment

Thermal contacts opening temperature 125 °C

Material

Impeller Cast iron
 Pump housing Cast iron
 Stator housing Cast iron
 Shaft Stainless steel
 O-rings Nitrile rubber

Mechanical face seals

| Alternative | Inner seal | Outer seal |
|-------------|--|--|
| 1 | Carbon/Corrosion resistant cemented carbide | Corrosion resistant cemented carbide/ Corrosion resistant cemented carbide |
| 2 | Corrosion resistant cemented carbide/ Corrosion resistant cemented carbide | Corrosion resistant cemented carbide/ Corrosion resistant cemented carbide |

Surface Treatment

All cast parts are primed with a water-borne primer. The finishing coat is a high-solid two pack paint.

Weight

See dimensional drawing.

Option

3140.090 Ex. proof design
 3140.980 Industrial design
 Surface treatment Epoxy treatment
 Leakage sensor in stator housing FLS
 Leakage sensor in oil housing CLS
 Other cables
 Zinc anodes

Accessories

Discharge connections, adapters, hose connections and other mechanical accessories.

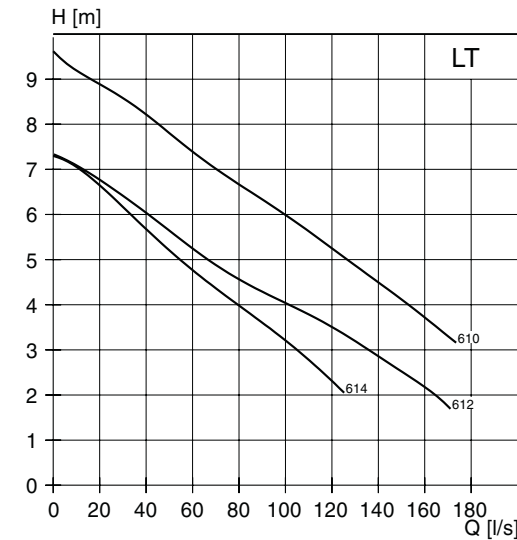
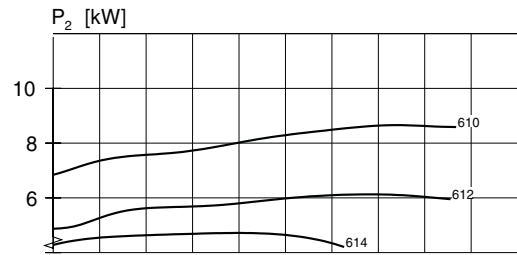
Electrical accessories such as pump controller, control panels, starters, monitoring relays, cables.

See separate booklet or www.flygt.com, for further information.

LT-Motor rating and performance curve

| Curve/Impeller No | Rated power, kW | Rated current, A | Starting current, A | Power factor cos φ | Impeller thoughtlet, mm | Ex proof version available | Installation | | | |
|------------------------------|-----------------|------------------|---------------------|--------------------|-------------------------|----------------------------|--------------|---|--|--|
| | | | | | | | P | S | | |
| 400 V, 50 Hz, 3 ~, 955 r/min | | | | | | | | | | |
| 610 | 8,8 | 18 | 87 | 0,87 | 102 | • | • | • | | |
| 612 | 8,8 | 18 | 87 | 0,87 | 102 | • | • | • | | |
| 614 | 8,8 | 18 | 87 | 0,87 | 82 | • | • | • | | |

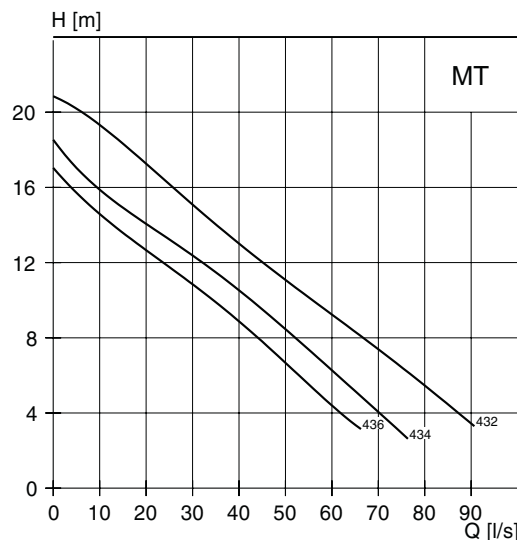
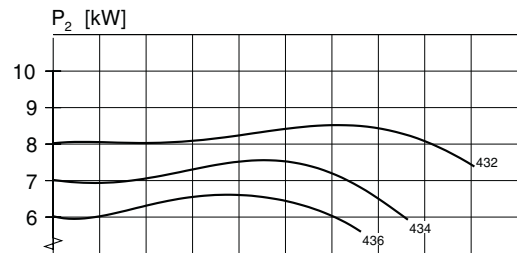
Y/D starting current is approximately 1/3 of D starting current.



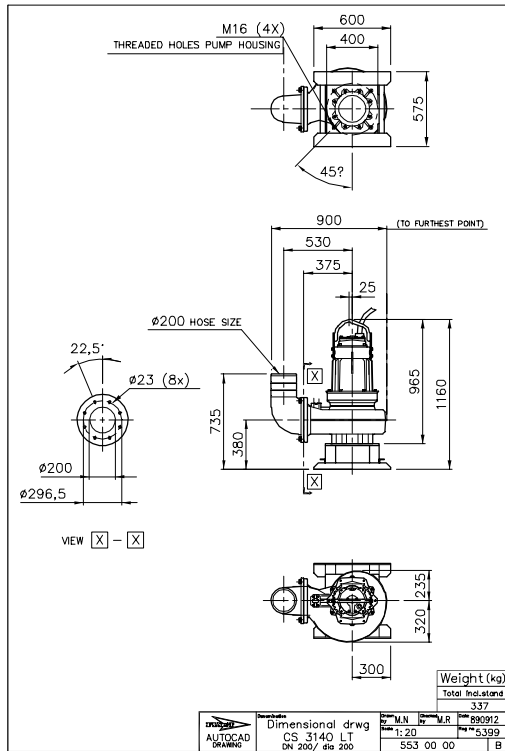
MT-Motor rating and performance curve

| Curve/Impeller No | Rated power, kW | Rated current, A | Starting current, A | Power factor cos φ | Impeller thoughtlet, mm | Ex proof version available | Installation | | | |
|-------------------------------|-----------------|------------------|---------------------|--------------------|-------------------------|----------------------------|--------------|---|--|--|
| | | | | | | | P | S | | |
| 400 V, 50 Hz, 3 ~, 1455 r/min | | | | | | | | | | |
| 432 | 9,0 | 19 | 116 | 0,81 | 102 | • | • | • | | |
| 434 | 9,0 | 19 | 116 | 0,81 | 102 | • | • | • | | |
| 436 | 9,0 | 19 | 116 | 0,81 | 93 | • | • | • | | |

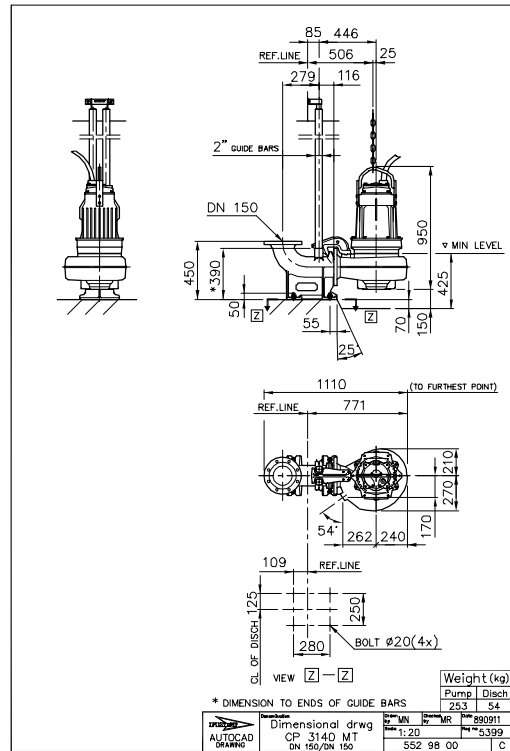
Y/D starting current is approximately 1/3 of D starting current.



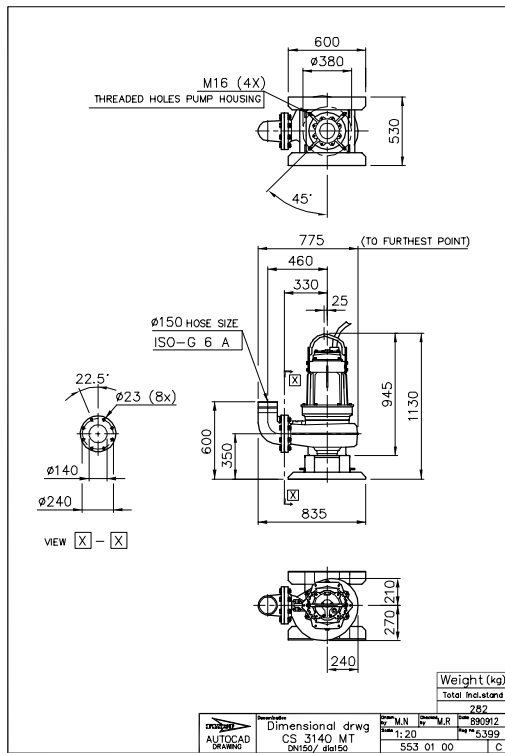
LT, S-installation



MT, P-installation



MT, S-installation



HT, P-installation

