

## 100/100 LP IIIr



The pump has a replaceable moulded linatex impeller and thick rubber liners for the best abrasion resistance, and a good hydraulic performance. Three unique Linatex gland seal options are available. The cast iron bearing assembly and high tensile steel shaft, is assembled as a cartridge and can be adjusted axially to maintain hydraulic clearances as the impeller and liners wear.

The bearings are designed for long life with grease lubrication. They are sealed with double grease seals and a protective flinger. The rigid pedestals are made in Cast iron or welded steel. The whole unit is protected from overall corrosion with an engineered paint system.

Standard curve  
Arrangement drawing  
Sectioned drawing

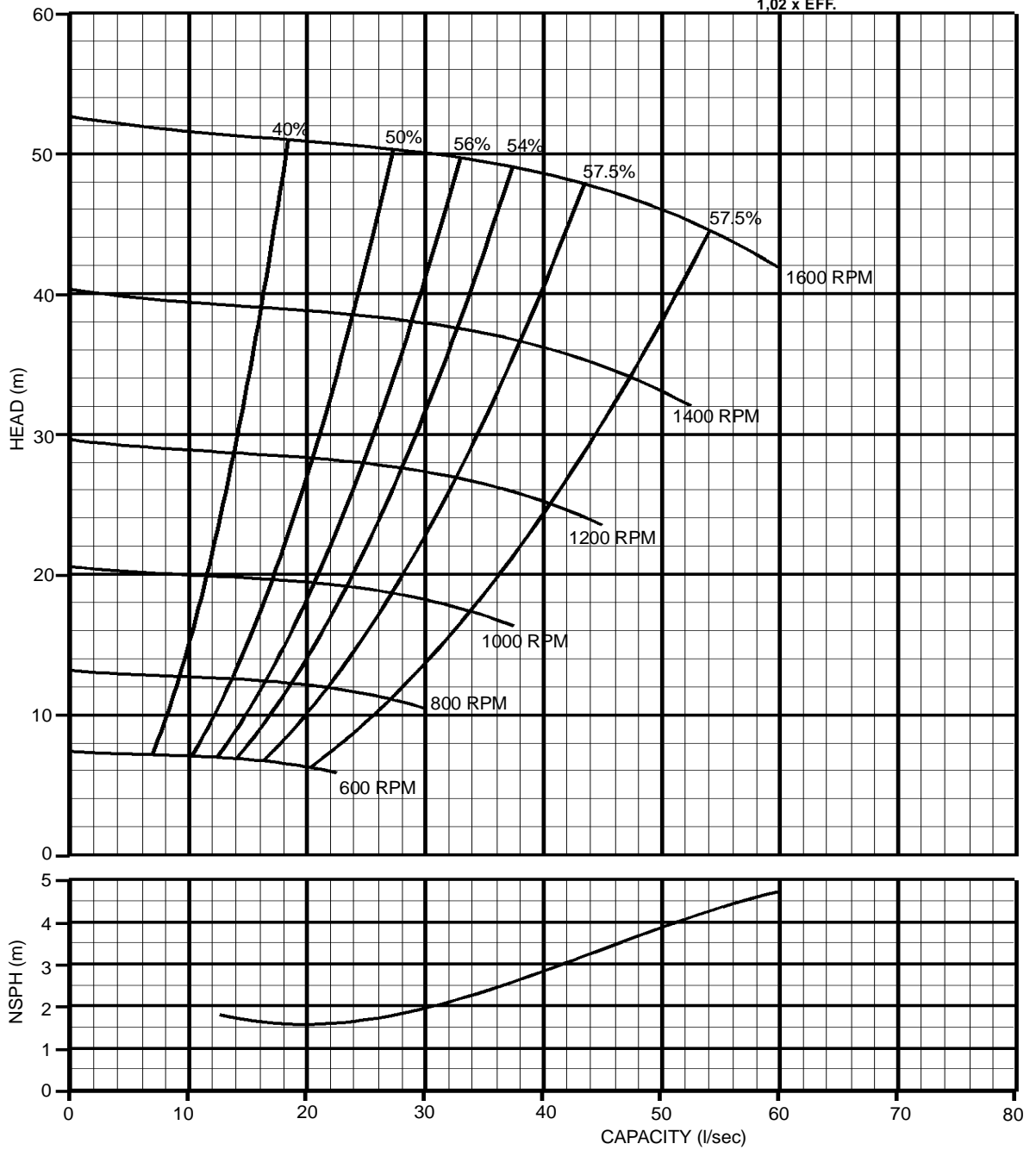
Standard materials and parts list  
Bearing Assembly  
Motor support, Maintenance arm assembly  
Typical Bearing Assembly Drawing

Dry gland assembly  
Packed gland assembly  
Hydrostatic gland assembly  
Typical Dry Gland Drawing  
Typical Packed Gland Drawing  
Typical Hydrostatic Gland Drawing

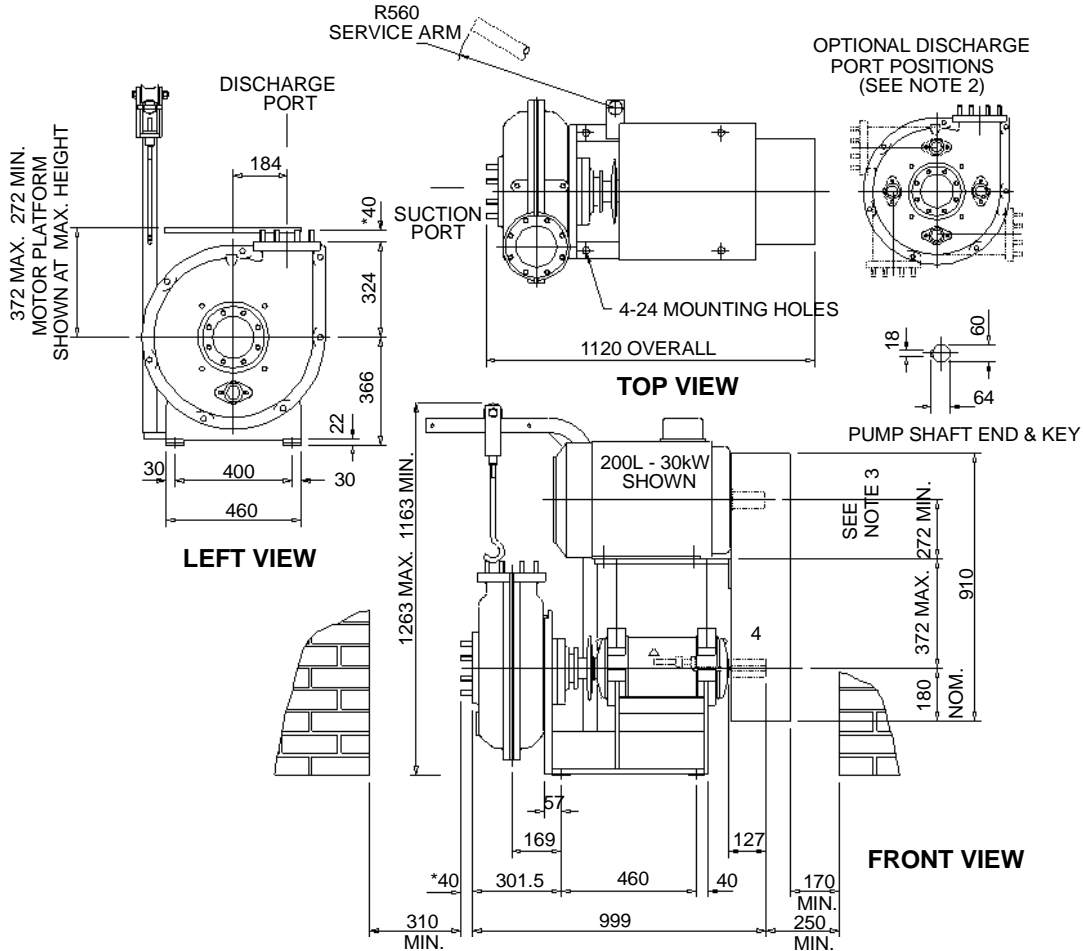
### 100/100 LP IIIr Standard curve

IMPELLER DIA : 340 mm	MAX SPEED : 1600 RPM	MAX SOLIDS : 40 mm	CURVE NO : 100/2.96
No. OF VANES : 4	MAX KW : 75 KW		DATE : 28/01/97

$$KW\ POWER = \frac{L/s \times m \times SG.}{1.02 \times EFF.}$$



## 100/100 LP IIIr Arrangement drawing



**NOTES:**

1) MAX. FLANGE LOADS & TURNING MOMENTS ARE AVAILABLE, BUT PUMP MUST NOT BE USED AS AN ANCHOR. ALL PIPES MUST BE INDEPENDENTLY SUPPORTED.

2) POSITION OF EYEBOLT & DRAIN PLUG WILL ALSO ROTATE THE SAME AMOUNT AS THE DISCHARGE PORT.

3) ADD MOTOR HEIGHT  $\phi$  OBTAIN PULLEY CENTRE DISTANCE.

FLANGE DETAILS TO BS4504 (mm)					
	PCD.	STUD	HOLE	No. OFF	*STUD LENGTH
SUCTION	180	M16	-	8	40
DISCHARGE	180	M16	-	8	40

FLANGE DETAILS TO ASA125 (inch)					
	PCD.	STUD	HOLE	No. OFF	*STUD LENGTH
SUCTION	7.5	5/8	-	8	1.95
DISCHARGE	7.5	5/8	-	8	1.75

\* STUD LENGTH PROTRUDING

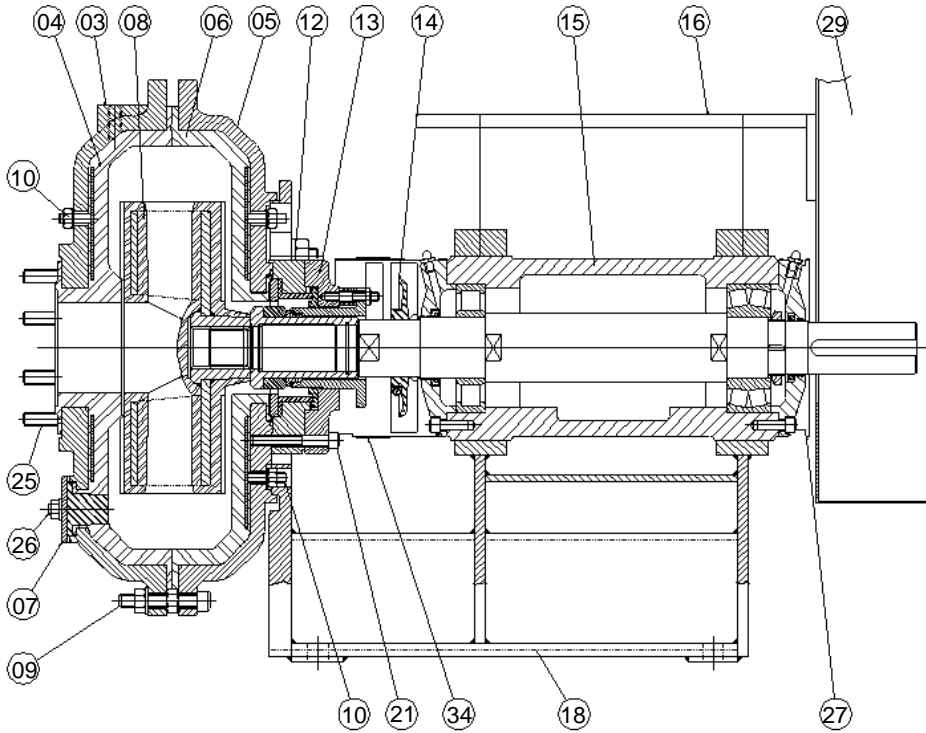
REFERENCE DRAWINGS	
DESCRIPTION	DRAWING No.
PUMP ASSEMBLIES	GA-D-100, GA-H-100 & GA-P-100
BEARING ASSEMBLY	15-100
GLAND ASSEMBLIES	GD13-100, GH13-100 & GP13-100
MOTOR SUPPORT ASSY.	16-100
SERVICE ARM ASSEMBLY	28-100
BELT GUARD	29-100
SHAFT GUARD	31-100

WEIGHT OF PUMP 440kg.  
 WEIGHT OF 200L MOTOR 190kg.  
 WEIGHT OF 250S MOTOR 420kg.

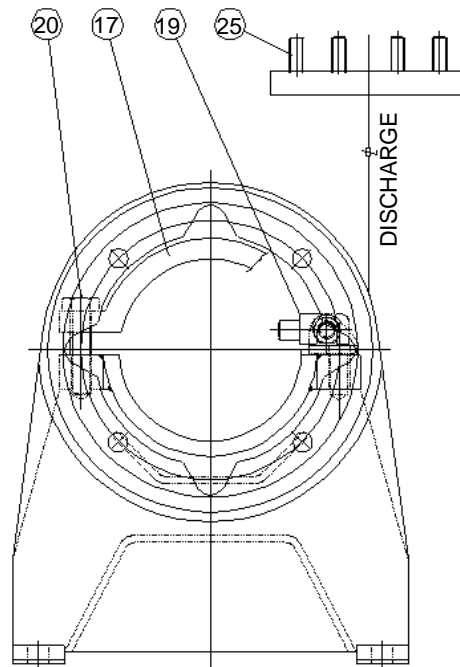
MAX. MOTOR FRAME: 200L - 30kW WITH STANDARD MOTOR PLATFORM.

MAX. MOTOR FRAME: 250S - 55kW WITH EXTENDED MOTOR PLATFORM.

## 100/100 LP IIIr Sectioned drawing



SECTION THROUGH PUMP ASSEMBLY



FRONT VIEW ON PEDESTAL